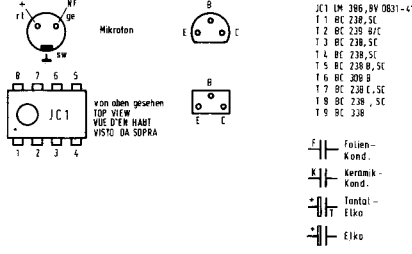


C 7	1,	2,	3,	4,	5,	6, 17,	7,	8,	9,	10,	18, 11,	12,		13, 14,	15,		16,	
R	1,	2,	3,	4,	7,	58, 3, 10, 7, 5, 13,	20,	12,	15,	14,	31, 32, 16,	17, 18,	19,	20, 21,	22,	23, 24,	29, 28, 25,	27, 26,



JC1 LM 386, BV 0831-410.40

T1 BC 238, SE

T2 BC 238, SE

T3 BC 238, SE

T4 BC 238, SE

T5 BC 238, SE

T6 BC 206 P

T7 BC 238 F, SC

T8 BC 238, SC

T9 BC 338

D1 COY 85

D2 D473

D3 5W1

D 0473

D5, D8 AA 139

D6, D7 8Z 102 1VU

D6 238 SE BV 9654-416.97

DC-VOLTAGES MEASURED IN RECORDING MODE WITHOUT SIGNAL AND BATTERY SUPPLY WITH MAINS UNIT 667 (15V ON EXTERNAL VOLTAGE SUPPLY SOCKET)

PLAYBACK LEVEL

RECORDING LEVEL

TENSIONS CONTINUES MESUREES EN POSITION D'ENREGISTREMENT SANS SIGNAL AVEC ALIMENTATION VIA BLOC SECTEUR 667 (15V SUR LA PRISE D'ALIMENTATION DE TENSION EXTERNE)

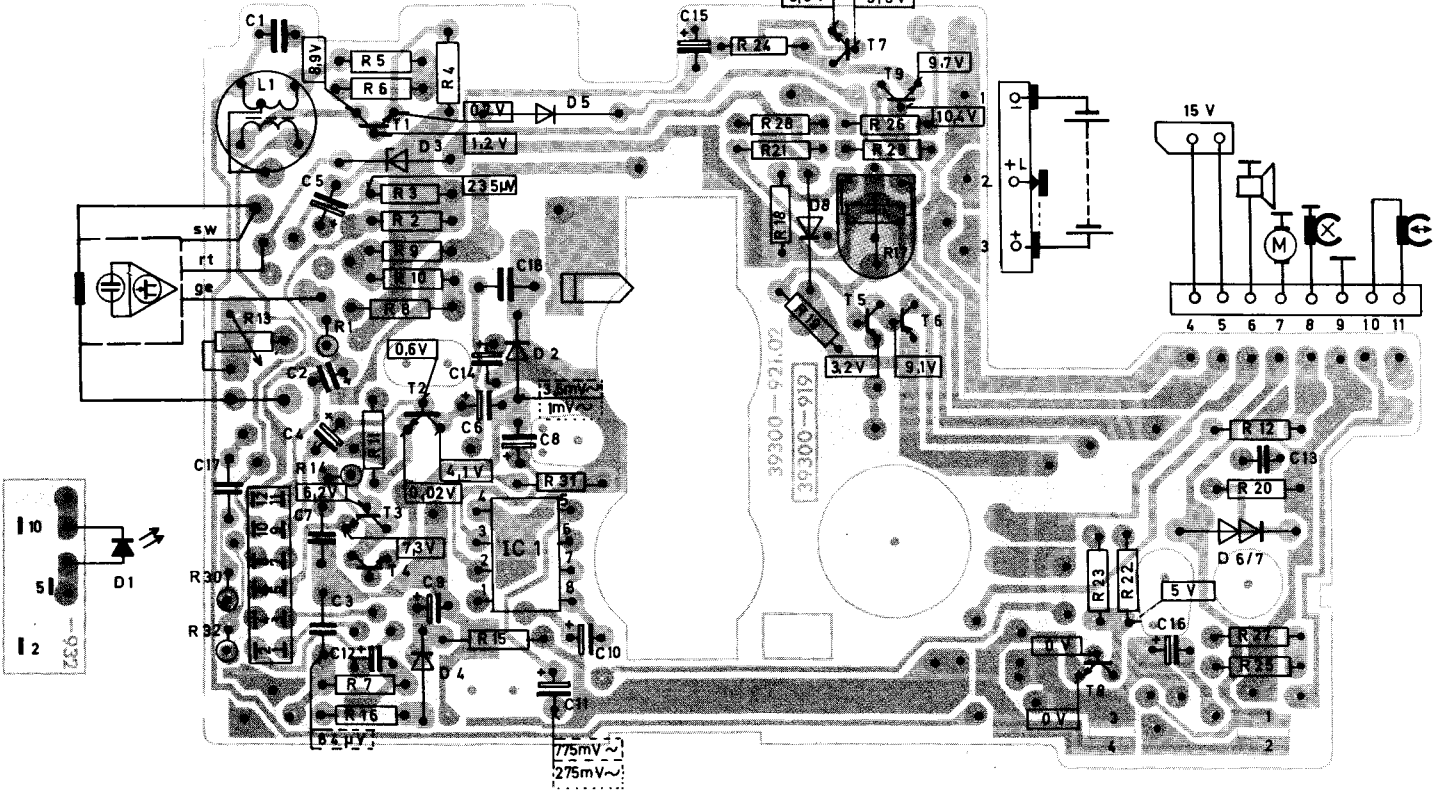
NIVEAU LECTURE

NIVEAU ENREGISTREMENT



### Stenorette 2010

(36005 - 906.00)



### Druckschaltungsplatten

PRINTED CIRCUIT BOARD  
PLAQUES CIRCUITS IMPRIMES  
PIASTRE STAMPATE

S 1	1/2	2/3	3/4
Start			●
Stop		●	
Rücklauf	●	●	

