

Feb 10, 2011

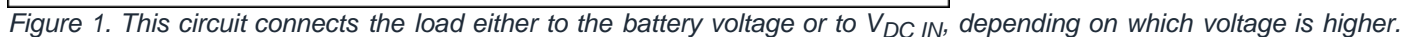
Battery/Charger Load Switch Approximates Ideal Diode

Abstract: Two circuits are described. The first uses external MOSFETs driven by the Power OK (POK) output of a Li-cell charger IC (MAX8814), to switch a load between battery and charging source without intervention from a microcontroller or system software. For charger ICs without a POK output (such as the MAX1507), the second circuit does the same switching using MOSFETs and a comparator (MAX920).

A similar version of this article appeared in the July 19, 2010 issue of *Electronic Design* magazine.

The simplest and lowest-cost method for this battery/adaptor power handoff is a diode-OR connection. The load connects to each power source (battery and adaptor) through separate Schottky diodes, so power is applied by the higher voltage—battery or adaptor. The drawback to this approach is the power loss ($P_D = I_{\text{BATTERY}}V_{\text{DIODE}}$) and voltage drop ($V_{\text{DIODE}} = 0.350\text{V}$ at 0.5A , from the PMEG2010AEH data sheet) incurred when the battery services the load. Such losses may not be significant for high-voltage multicell batteries, but for 1-cell Li+ batteries or 2–4 cell NiMH batteries, the percentages of power loss and diode drop across the blocking diode are considerable.

The circuit of Figure 1 switches loads with a voltage drop of only 45mV at 0.5A, which is a head-room improvement of 350mV - 45mV = 305mV. When compared with the diode-OR connection (175mW vs. 22.5mW), the power saving is 152.5mW. At lower currents the dropout voltage is even lower. At 100mA, for instance, a diode drops about 270mV but the Figure 1 circuit drops only 10mV.



The Figure 1 circuit manages load switching without intervention from a microcontroller or system software. When operating on batteries and with $V_{DC\ IN}$ disconnected, the POK (Power OK) output for the [MAX8814](#) is high. This condition connects load and battery by turning on Q4 and Q3. Node 1 is biased to the battery voltage through R2, which maintains Q1 and Q2 OFF. When $V_{DC\ IN}$ connects to a DC source, Q1 and Q2 are held OFF because C1 raises node 1 to $V_{BATT} + V_{DC}$.

High voltage at the gates of Q1 and Q2 is generated instantly when $V_{DC\ IN}$ is applied. To prevent damage at the POK input, Q5 is configured as a source follower (voltage buffer). With the gate biased to the battery voltage, POK sees no voltage higher than the battery voltage. When POK goes low, current flows through Q5 and pulls down the gates of Q1 and Q2, turning them ON. $V_{DC\ IN}$ services the load, and the charger IC (U1) charges the battery. C1 and R1 provide a short delay that allows Q3 time to turn off, preventing unregulated current from flowing to the battery.

When $V_{DC\ IN}$ is removed, POK becomes a high-impedance node, and battery current flows through the body diode of Q3. The load voltage is $V_{BATT} - V_{DIODE}$. Because Q5's gate is biased at the battery voltage, Q5 conducts until POK reaches a voltage level sufficient to service the load by turning on Q4 and Q3. Figure 2 shows the response of the Figure 1 circuit (with battery installed), while $V_{DC\ IN}$ is applied and removed.

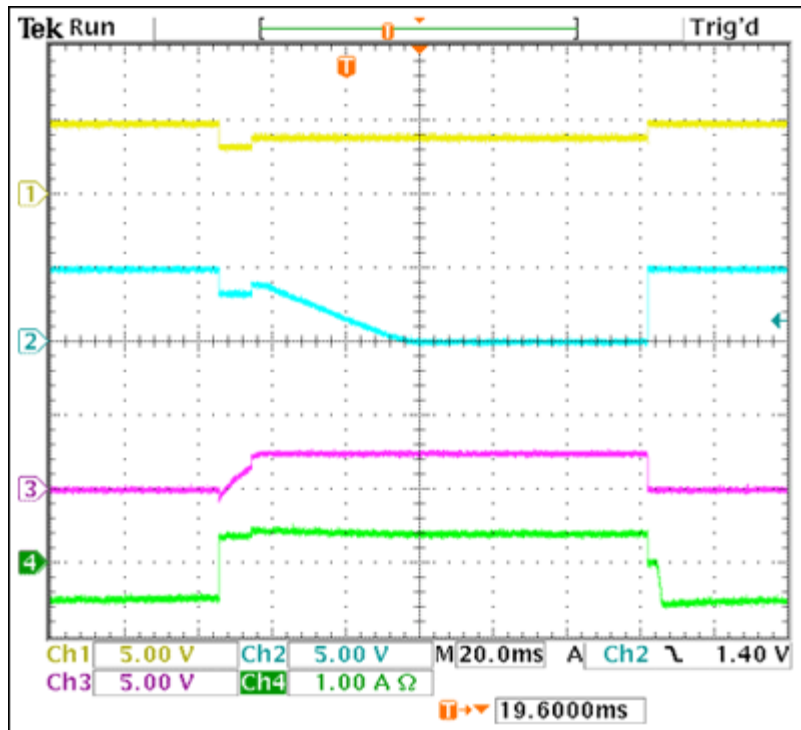


Figure 2. These waveforms illustrate behaviour of the Figure 1 circuit as the load is switched from DC power to battery and back to DC power. (CH1 is voltage across the load, CH2 is the DC supply voltage, CH3 is the active-low POK output, and CH4 is the battery current.)

A modified circuit (Figure 3) is suitable for battery-charging ICs such as the [MAX1507](#), which does not provide a POK output. The comparator (U3) provides a POK output by comparing $V_{DC\ IN}$ to the battery voltage. Like Figure 2, Figure 4 shows voltage at the load when $V_{DC\ IN}$ is applied and removed, for the Figure 3 circuit with battery installed.

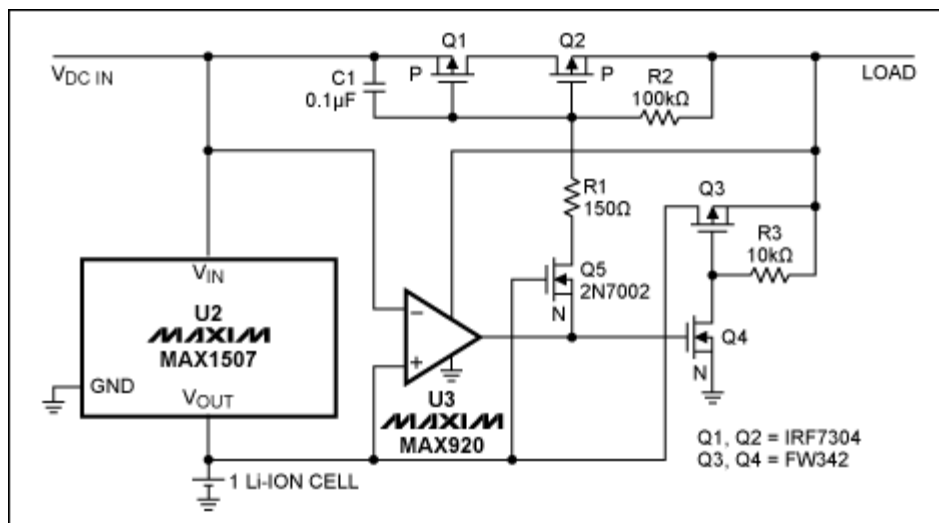


Figure 3. For battery-charger ICs without a POK output, this circuit performs the same function as that of Figure 1.

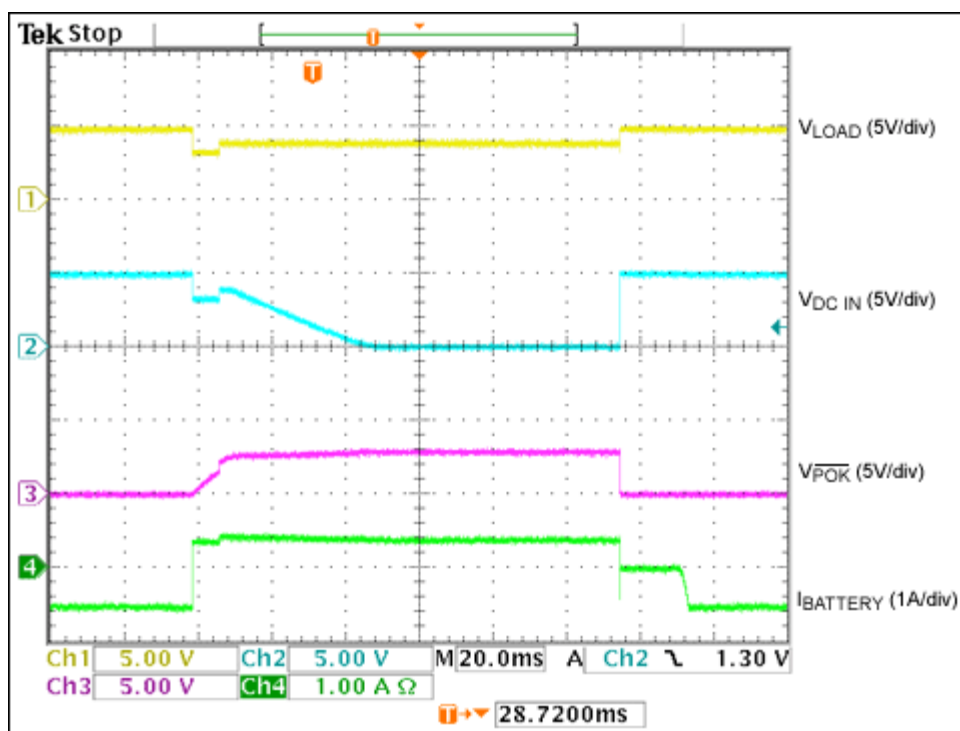


Figure 4. These waveforms illustrate behaviour of the Figure 3 circuit as the load is switched from DC power to battery and back to DC power. (CH1 is voltage across the load, CH2 is the DC supply voltage, CH3 is the active-low POK output, and CH4 is the battery current.)

Related Parts

MAX1507	Linear Li+ Battery Charger with Integrated Pass FET and Thermal Regulation in 3mm x 3mm Thin DFN	-- Free samples
MAX8814	28V Linear Li+ Battery Charger with Smart Autoboot Assistant	-- Free samples
MAX920	SOT23, 1.8V, Nanopower, Beyond-the-Rails Comparators With/Without Reference	-- Free samples

Automatic Updates

Would you like to be automatically notified when new application notes are published in your areas of interest? [Sign up for EE-Mail™](#).

More Information

For technical support: <http://www.maxim-ic.com/support>

For samples: <http://www.maxim-ic.com/samples>

Other questions and comments: <http://www.maxim-ic.com/contact>

Application note 4840: <http://www.maxim-ic.com/an4840>

AN4840, AN 4840, APP4840, Appnote4840, Appnote 4840

Copyright © by Maxim Integrated Products

Additional legal notices: <http://www.maxim-ic.com/legal>