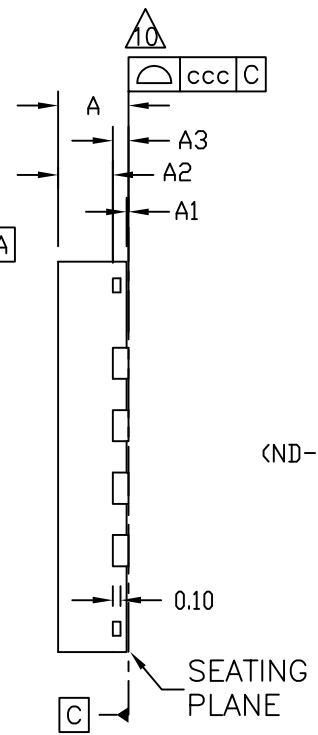
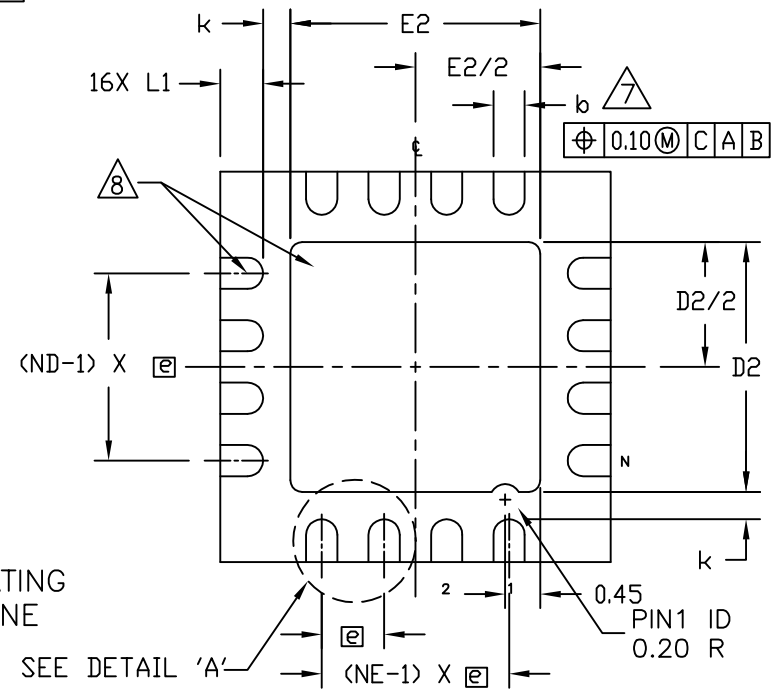


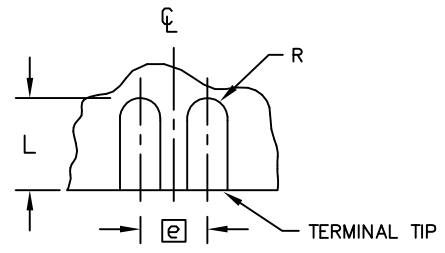
TOP VIEW



SIDE VIEW



BOTTOM VIEW



EVEN TERMINAL  
DETAIL 'A'

-DRAWING NOT TO SCALE-

**MAXIM**

TITLE:  
PACKAGE OUTLINE, 16L SAWN QFN,  
5X5X0.90MM

APPROVAL RAMON DE LEON 12/21/11	DOCUMENT CONTROL NO. 21-0643	REV. A	1/2
---------------------------------------	---------------------------------	-----------	-----

NOTES:

1. ALL DIMENSIONS ARE IN MILLIMETERS. ANGLES ARE IN DEGREES.
2. DIMENSIONING & TOLERANCING CONFORM TO ASME Y14.5M-1994.
3. N IS THE TOTAL NUMBER OF TERMINALS.
4. THE TERMINAL #1 IDENTIFIER AND TERMINAL NUMBERING CONVENTION SHALL CONFORM TO JESD 95-1 SPP-012. DETAILS OF TERMINAL #1 IDENTIFIER ARE OPTIONAL, BUT MUST BE LOCATED WITHIN THE ZONE INDICATED. THE TERMINAL #1 IDENTIFIER MAY BE EITHER A MOLD OR MARKED FEATURE.
5. DIE THICKNESS ALLOWABLE IS 0.305 mm MAXIMUM(.012 INCHES MAXIMUM)
6. PACKAGE WARPAGE MAX 0.08 mm.
7. DIMENSION b APPLIES TO METALLIZED TERMINAL AND IS MEASURED BETWEEN 0.15 mm AND 0.30 mm FROM TERMINAL TIP.
8. APPLIED FOR EXPOSED PAD AND TERMINALS. EXCLUDE EMBEDDING PART OF EXPOSED PAD FROM MEASURING.
9. ND AND NE REFER TO THE NUMBER OF TERMINALS ON EACH D AND E SIDE, RESPECTIVELY.
10. COPLANARITY APPLIES TO THE EXPOSED HEAT SINK SLUG AS WELL AS THE TERMINALS.
11. MATERIAL MUST COMPLY WITH BANNED AND RESTRICTED SUBSTANCES SPEC # 10-0131.
12. MARKING SHOWN IS FOR PACKAGE ORIENTATION REFERENCE ONLY.
13. NI/PD/AU LEAD FINISH.
14. ALL DIMENSIONS APPLY TO PbFREE (+) PKG. CODES.
15. PACKAGE CODE: G1655N-1

SYMBOL	MILLIMETER			INCH		
	MIN.	NOM.	MAX.	MIN.	NOM.	MAX.
A	---	---	0.90	---	---	.035
A1	---	---	0.05	---	---	.002
A2	---	0.65	0.70	---	.026	.028
A3	0.20 REF.			.008 REF.		
b	0.35	0.40	0.45	.014	.016	.018
D	4.9	5.0	5.1	.193	.197	.201
D2	3.10	3.20	3.30	.122	.126	.130
E	4.9	5.0	5.1	.193	.197	.201
E2	3.10	3.20	3.30	.122	.126	.130
k	MIN 0.2			MIN .008		
L	0.35	0.55	0.75	.014	.022	.030
e	0.80 BSC			.031 BSC		
R	0.175	---	---	.007	---	---
TOLERANCES OF FORM AND POSITION						
aaa	0.10			.004		
bbb	0.10			.004		
ccc	0.05			.002		



TITLE:  
PACKAGE OUTLINE, 16L SAWN QFN,  
5X5X0.90MM

APPROVAL  
RAMON DE LEON  
12/21/11

DOCUMENT CONTROL NO.  
21-0643

REV. 2/2  
A