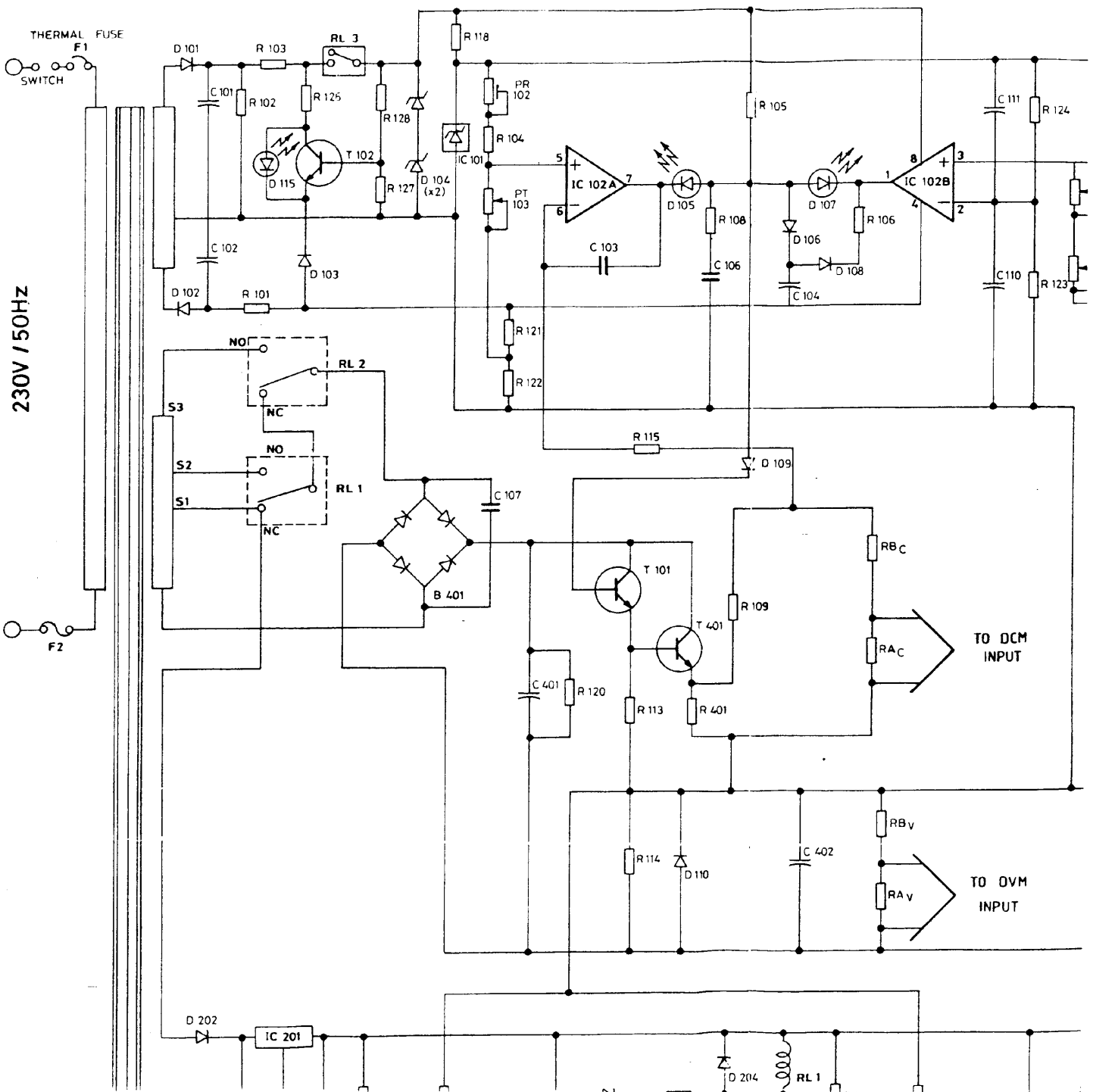
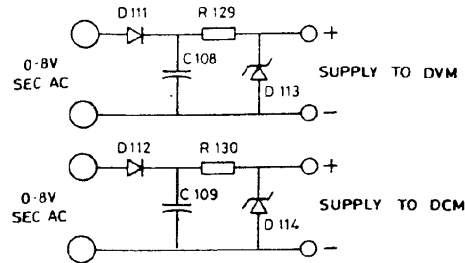
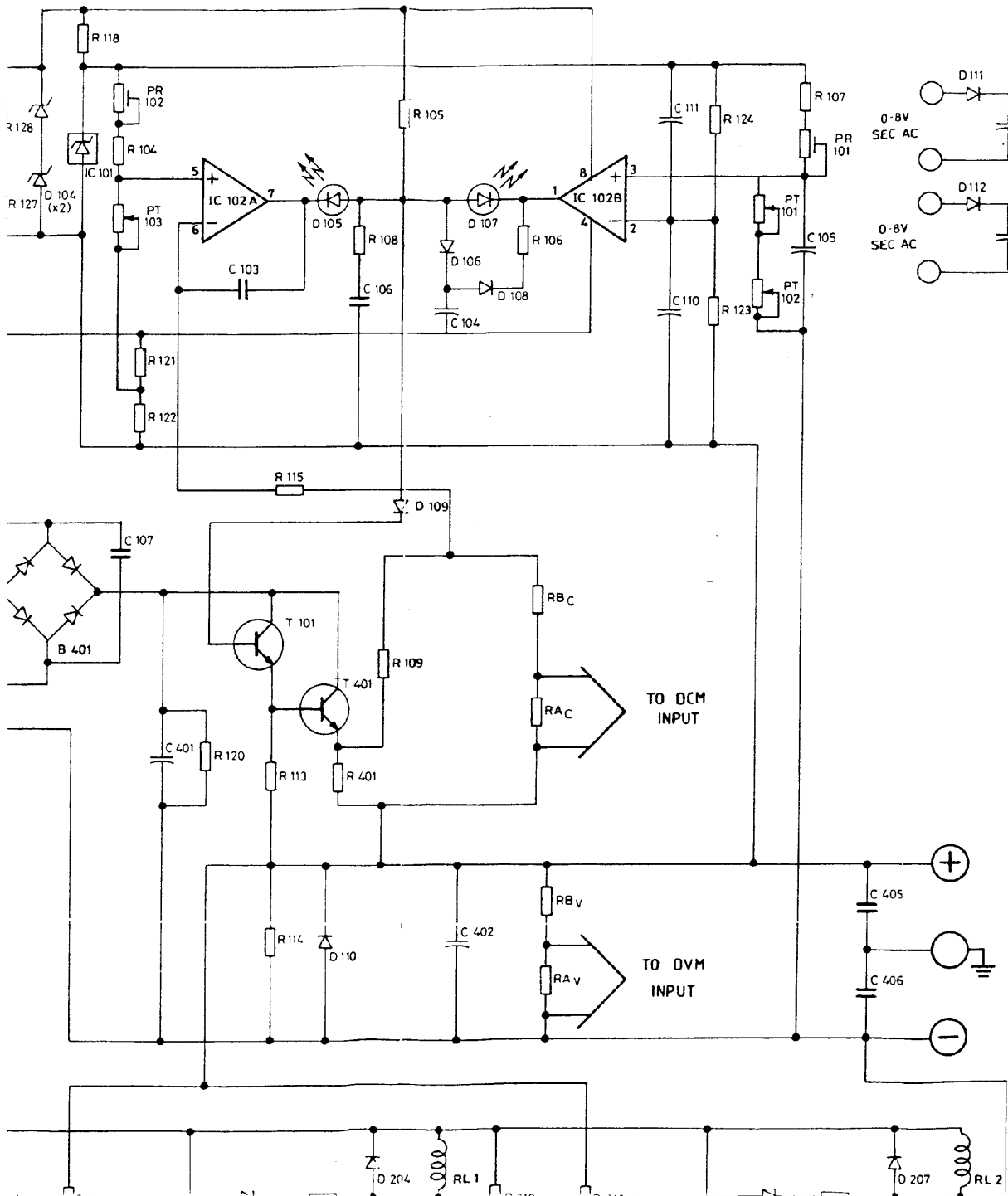


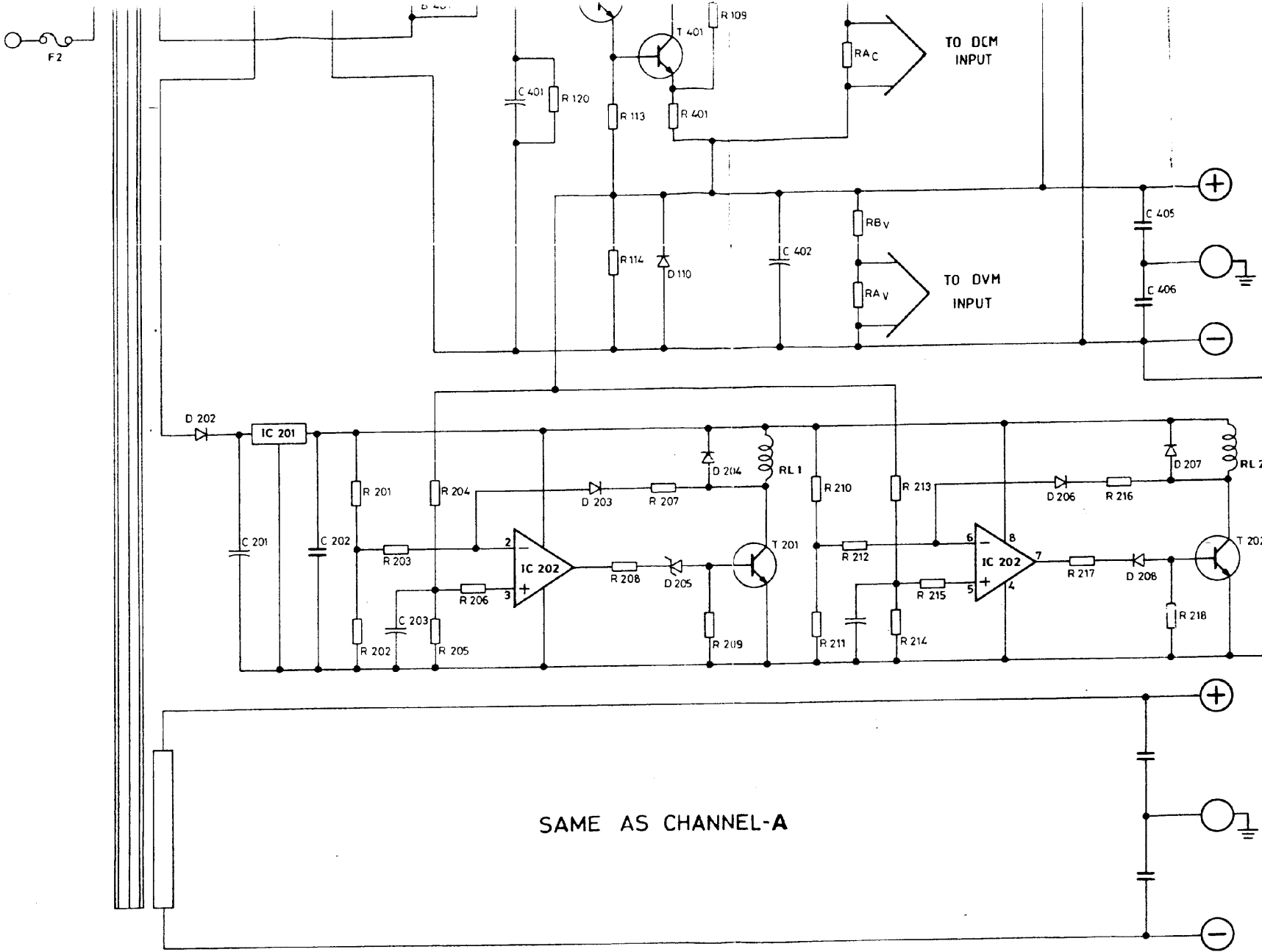
230V / 50Hz





OUTPUT A  
0 - 40V  
0 - 3A

R 101	220Ω 1/2W	R 401	0.22Ω 5W	D 201	—
R 102	4K7	R 402	—	D 202	—
R 103	390Ω 1/2W	R 403	—	D 203	1N 4002
R 104	150K/180K/220K	R 404	—	D 204	—
R 105	1K5	R 405	—	D 205	6.2V FZ
R 106	3K3			D 206	1N 4002
R 107	470Ω/560Ω/680			D 207	—
R 108	33K			D 208	6.2V FZ
R 109	—	C 101	220 / 25V		
R 110	—	C 102	1000 / 16V	B 401	LT 4A 03(x4)
R 111	—	C 103	10KPF		
R 112	100Ω	C 104	100 / 35V	T 101	TIP 31A
R 113	1K2	C 105	1 / 63V	T 102	2 5C 2236
R 114	10K	C 106	10 KPF		
R 115	330Ω (MFR)	C 107	0.22μF / 100V		
R 116	—	C 110	—	T 201	2 5D 468C
R 117	—	C 111	220 / 35V	T 202	2 5D 468C
R 118	1K5 (MFR)				
R 119	—	C 201	470μF / 35V	T 401	2N 3773
R 120	8K2 1W	C 202	100 KPF		
R 121	33K (MFR)	C 203	10 / 16V	IC 101	LM 336 (2.5V)
R 122	220Ω (MFR)	C 204	10 / 16V	IC 102A	LM 1458
R 123	470Ω (MFR)			IC 102B	—
R 124	6K8 (MFR)				
R 125	—			IC 201	7812
R 126	10K	C 401	3300 / 80V	IC 202	LM 1458
R 127	4K7	C 402	100 / 50V	RL	—
R 128	4K7	C 403	10 KPF	RL 1	12V RELAY
		C 404	—	RL 2	—
				RL 3	THERMAL RELAY
R 201	4K7			F 1	3.5 AMPS
R 202	3K3	D 101	—	F 2	3.0 AMPS
R 203	10K	D 102	1N 4002		FAST BLOW
R 204	56K	D 103	6.2V FZ		
R 205	33K	D 104	12V FZ		
R 206	10K	D 105	LED (RED)	<b>DPM PCB</b>	
R 207	100K	D 106	1N 4148	R 126	100Ω 1/4W
R 208	3K3	D 109	LED (GREEN)	R 127	—
R 209	10K	D 108	—	C 108	100 / 16V
R 210	4K7	D 109	1N 4002	C 109	—
R 211	3K3	D 110	LT 4A 03	D 111	1N 4002
R 212	10K	D 111	—	D 112	—
R 213	47K	D 112	—	D 113	9.1 VZ
R 214	10K	D 115	—	D 114	—
R 215	10K	D 114	—	RB <sub>C</sub>	33K
R 216	100K	D 115	LED (RED)	RA <sub>C</sub>	1K5
R 217	3K3			RB <sub>V</sub>	100K
R 218	10K			RB <sub>V</sub>	100Ω



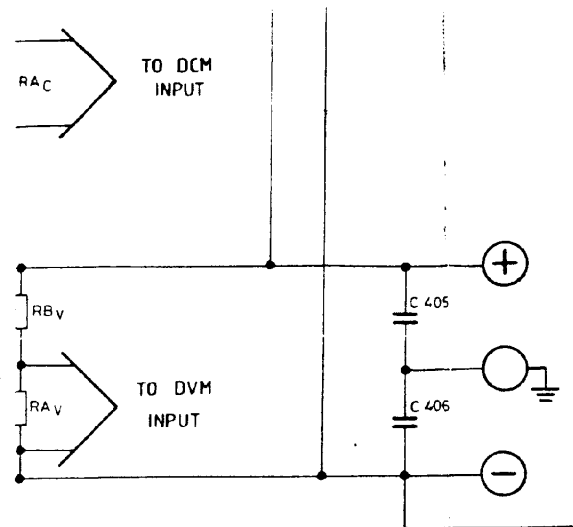
OUTPUT A  
0 - 40V  
0 - 3A

OUTPUT B  
0 - 40V  
0 - 3A

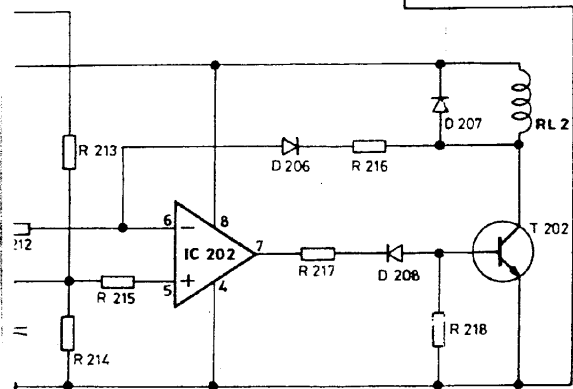
SAME AS CHANNEL-A

SCHEMATIC CIRCUIT DIAGRAM OF MODEL PS 2403

SONODYNE
MODEL :
DRN BY :



**OUTPUT A**  
0 - 40V  
0 - 3A



**OUTPUT B**  
0 - 40V  
0 - 3A

						RELAY	
R 201	4K7			F 1	3.5 AMPS		
R 202	3K3	D 101	1N 4002	F 2	3.0 AMPS		
R 203	10K	D 102			FAST BLOW		
R 204	56K	D 103	6.2V FZ				
R 205	33K	D 104	12V FZ				
R 206	10K	D 105	LED (RED)	<b>DPM PCB</b>			
R 207	100K	D 106	1N 4148	R 126	100 Ω 1/4 W		
R 208	3K3	D 109	LED (GREEN)	R 127			
R 209	10K	D 108	1N 4002	C 108	100 / 16V		
R 210	4K7	D 109			C 109		
R 211	3K3	D 110	LT 4A 03	D 111	1N 4002		
R 212	10K	D 111	---	D 112			
R 213	47K	D 112	---	D 113	9.1 VZ		
R 214	10K	D 115	---	D 114			
R 215	10K	D 114	---	RB C	33K		
R 216	100K	D 115	LED (RED)	RA C	1K5		
R 217	3K3			RB V	100K		
R 218	10K			RB V	100Ω		

**NOTE :-**

ALL RESISTORS ARE 1/4W OHMS AND CAPACITORS IN MICROFARADS UNLESS SPECIFIED OTHERWISE.

ALL COMPONENTS OF CHANNEL B IS SAME AS CHANNEL A - IS LISTED.

- PR 101 - VOLTAGE ADJUST PRESET - 220 Ω (CERACAR)
- PR 102 - CURRENT ADJUST PRESET - 20K
- PT 101 - VOLTAGE ADJUST POT - 10K (COARSE)
- PT 102 - VOLTAGE ADJUST POT - 1K (FINE)
- PT 103 - CURRENT ADJUST POT - 100K

**MODEL PS 2403**

SONODYNE INTL LIMITED., SEEPZ, BOMBAY				DATE: 9-2-96	
MODEL : PS-2403			DRG. NO: SIL/16/0031		
DRN BY :	CHD. BY :	APPD. BY :	REV. DATE	REV	
ALTA F					