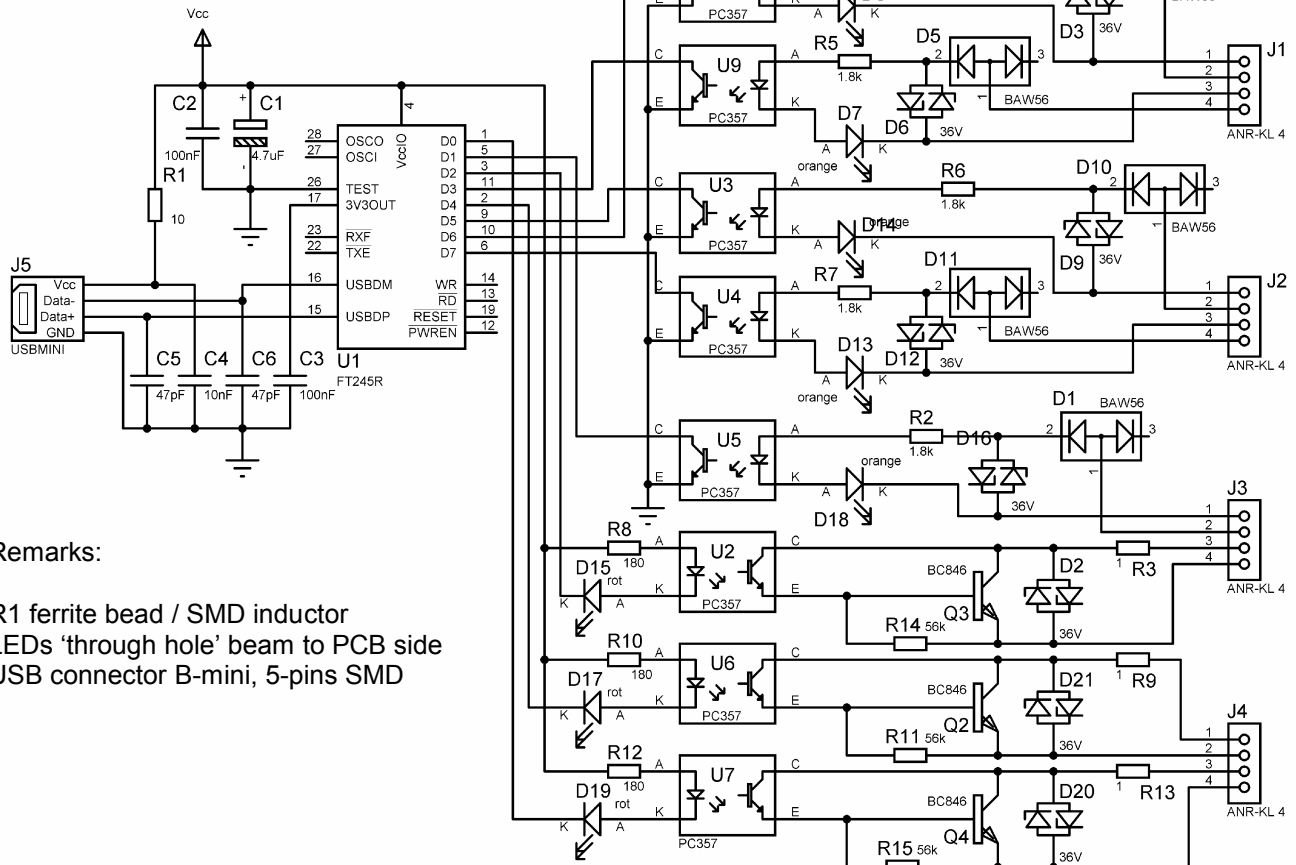


USB-Opto I/O 5+3

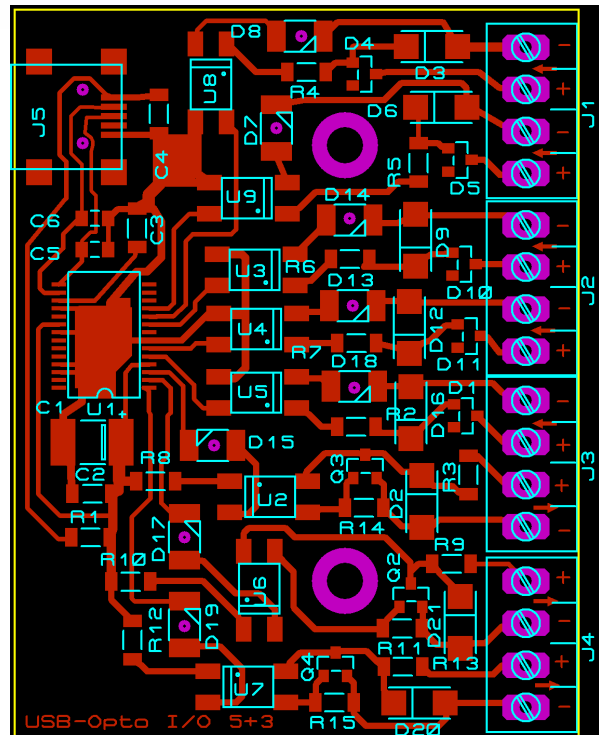
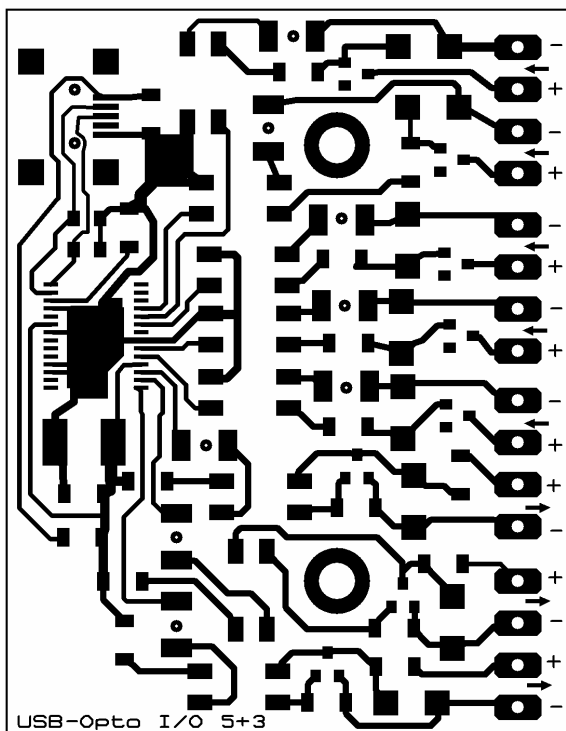
The board is a simple opto isolated USB interface with 3 outputs and 5 inputs. Build from the FTDI FT245R chip it is bus powered. The single sided PCB is mounted on a plastic Hut-Rail clamp. It is used for interfacing between PC and I/O-boards of older PLCs. LEDs are showing the state of inputs and outputs.

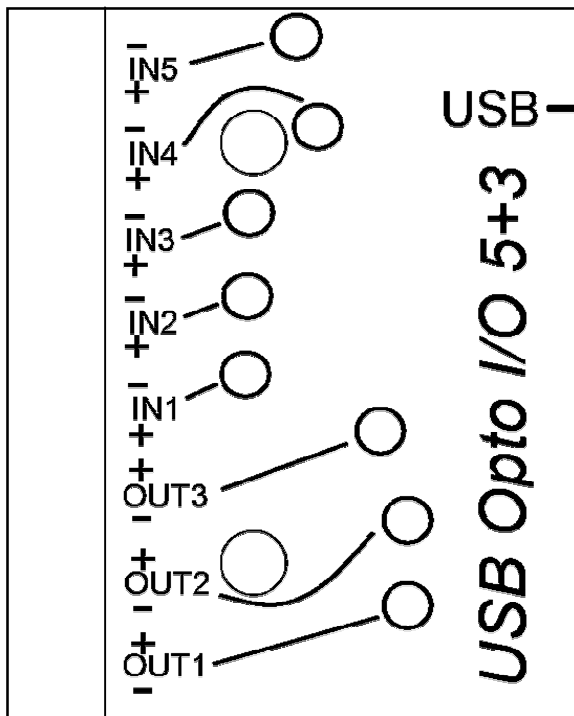
Board size: 60 * 46 mm
 Input voltage: 12..30 V
 Input current: 4..14 mA
 Output current: 200 mA



Remarks:

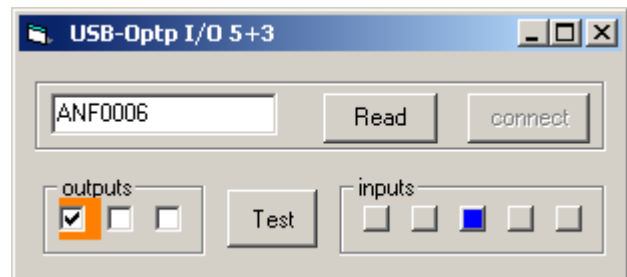
R1 ferrite bead / SMD inductor
 LEDs 'through hole' beam to PCB side
 USB connector B-mini, 5-pins SMD





Sticker (transparent) for PCB upper side

Sample program USB SPS.EXE for testing



Visual Basic Vers. 6 class-module

The module depends on the FTDI sample code. It uses the APID32.DLL from Desaware Inc. (www.desaware.com). Description of properties and methods as comments in the source code.

The constant `DEVICE_IDENT` in the class module has to be identical to the **product description string** programmed with the MProg software. (from FTDI www.ftdichip.com)

