

亿振达 PIC K150 编程器说明书

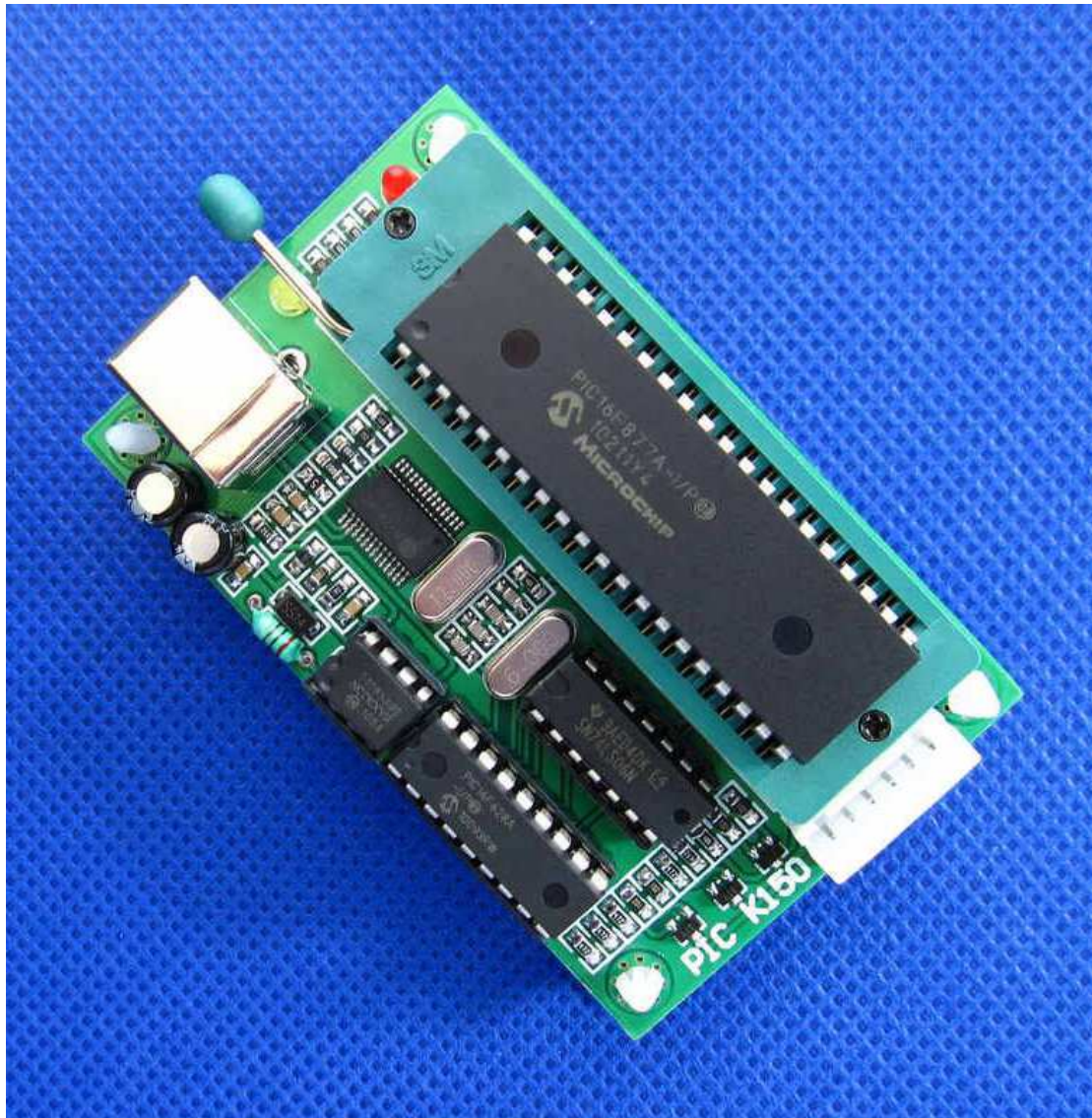
1-10

The USB PIC K150 microcontroller programmer

Hardware version V2.0

File version V2.0

Product Image



Thank you for PIC K150 EZONEDA.COM the programmer.
Any questions or comments about the product please do not hesitate to contact us.

Email: chum_sales@ezoneda.com

website: www.ezoneda.com

PIC K150 EZONEDA.COM programmer manual

2-10

Product Description:

K150 is the latest of a low-cost high-performance PIC programmer, support most popular PIC chip burning
Write, read, encryption and other functions, use a high-speed USB communication, ultra-fast programming, programming quality is stable and reliable. (Speed
Average PICSTART + 3-5 times) fully automatic programming verification; with 40pin DIP programmer seat, direct programming
8pin-40pin DIP chip; outside 8pin-40 pin chip software compatible board the the ICSP interface online download;
The Windows98 and Windows2000/NT, Windows XP operating system;
software will constantly with the PIC's new device

Upgrade. Master chip retains DIP package with seat! (Note: Some manufacturers of similar programmer master chip SMD parts, This caused no small trouble to future upgrades! Can not even upgrade the company's products provide lifelong upgrade service)
Support the PIC microcontroller models:

10 SERIES:

PIC10F200* PIC10F202* PIC10F204* PIC10F206*
PIC10F220* PIC10F222*

12C SERIES::

PIC12C508 PIC12C508A PIC12C509 PIC12C509A
PIC12C671 PIC12C672 PIC12CE518 PIC12CE519
PIC12CE673 PIC12CE674

12F SERIES:

PIC12F508 PIC12F509 PIC12F629 PIC12F635
PIC12F675 PIC12F683

16C SERIES::

PIC16C505 PIC16C554 PIC16C558 PIC16C61
PIC16C62 PIC16C62A PIC16C62B PIC16C63
PIC16C63A PIC 16C64 PIC16C64A PIC16C65
PIC16C65A PIC16C65B PIC16C66 PIC16C66A
PIC16C67 PIC16C620 PIC16C620A PIC16C621
PIC16C621A PIC16C622 PIC16C622A PIC16C71
PIC16C71A PIC16C72 PIC16C72A PIC16C73
PIC16C73A PIC16C73B PIC16C74 PIC16C74A
PIC16C74B PIC16C76 PIC16C77 PIC16C710
PIC16C711 PIC16C712 PIC16C716 PIC16C745
PIC16C765 PIC16C773 PIC16C774 PIC16C83
PIC16C84

16F SERIES::

PIC16F505 PIC16F506 PIC16F54 PIC16F57*
PIC16F59* PIC16F627 PIC16LF627A PIC16F627A

PIC16F628 PIC16LF628A PIC16F628A PIC16F630
PIC16F631 PIC16F631-1 PIC16F636 PIC16F636-1
PIC16F639* PIC16F639-1* PIC16F648A PIC16F676
PIC16F677 PIC16F677-1 PIC16F684 PIC16F685*
PIC16F685-1* PIC16F687* PIC16F687*-1 PIC16F688
PIC16F689* PIC16F689-1* PIC16F690* PIC16F690-1*
PIC16F716 PIC16F72 PIC16F73 PIC16F74

亿振达 PIC K150 编程器说明书

3-10

PIC16F76 PIC16F77 PIC16F737 PIC16F747
PIC16F767 PIC16F777 PIC16F83 PIC16F84
PIC16F84A PIC16F87 PIC16F88 PIC16F818
PIC16F819 PIC16F870 PIC16F871 PIC16F872
PIC16F873 PIC16F873A PIC16LF873A PIC16F874
PIC16F874A PIC16F876 PIC16F876A PIC16F877
PIC16F877A

18 系列:

PIC18F242 PIC18F248 PIC18F252 PIC18F258 PIC18F442 PIC18F448
PIC18F452 PIC18F458 PIC18F1220 PIC18F1320 PIC18F2220 PIC18F2320
PIC18F2321 PIC18F4210 PIC18F2331 PIC18F2450 PIC18F2455 PIC18F2480
PIC18F2510 PIC18F2515 PIC18F2520 PIC18F2525 PIC18F2550 PIC18F2580
PIC18F2585 PIC18F2610 PIC18F2620 PIC18F2680 PIC18F4220 PIC18F4320
PIC18F6525 PIC18F6621 PIC18F8525 PIC18F8621 PIC18F2331 PIC18F2431
PIC18F4331 PIC18F4431 PIC18F2455 PIC18F2550 PIC18F4455 PIC18F4550
PIC18F4580 PIC18F2580 PIC18F2420 PIC18F2520 PIC18F2620 PIC18F6520
PIC18F6620 PIC18F6720 PIC18F6585 PIC18F6680 PIC18F8585 PIC18F8680
.....

Features:

1 using the plug-and-play USB communication. Convenient desktop and laptop with no serial port.

The programming speed much faster than PICSTARTPLUS.

3 can be easily read out the contents of the program area of the chip.

4 fully automatic programming checksum.

5. Comprehensive information prompts, allowing users a clear understanding of the working state.

The installation and use of the K150 programmer

First, the hardware installation:

The K150 programmer hardware installation is very simple, the random distribution of the USB data cable, a plug into the computer's USB port, and the other head

Plugged into the USB port of the programmer, the hardware installation can be completed. After the hardware is installed, the computer will automatically find the new hardware, then I

Required prior to installing the driver, open the file you can see we provide a name for the driver file, double-click the transport Line installation. Drive after you install your computer will be more than ever before a COM port.

PIC K150 billion Zhenda programmer manual

4-10

Second, virtual COM port confirmation:

Virtual COM port from the USB port can be viewed from the Device Manager in the System, XP system, for example, specific steps

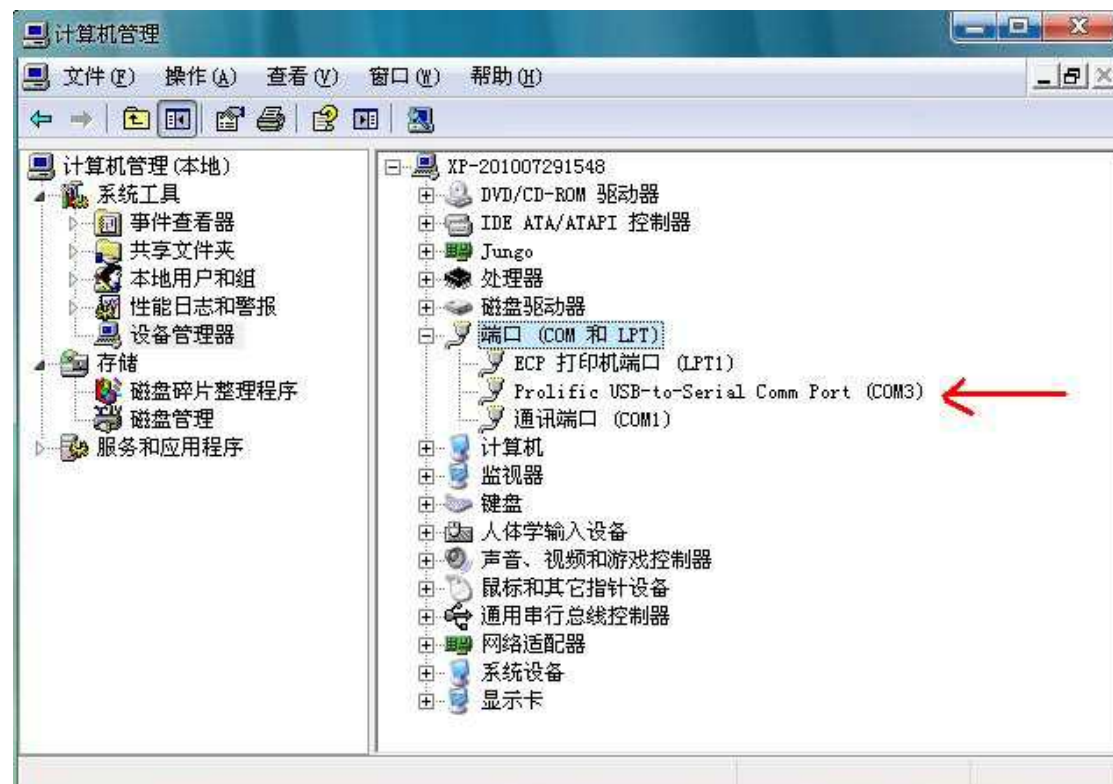
Proceed as follows:

Right-click on the desktop "My Computer" shortcut picture -> select "Manage" -> then select "Device Manager" -> "end

Ports (COM and LPT) "

As can be seen from the figure below, out of the virtual COM port is COM3.

According to our experience, generally out of the virtual serial port COM3 or COM4, of course, there may be others.



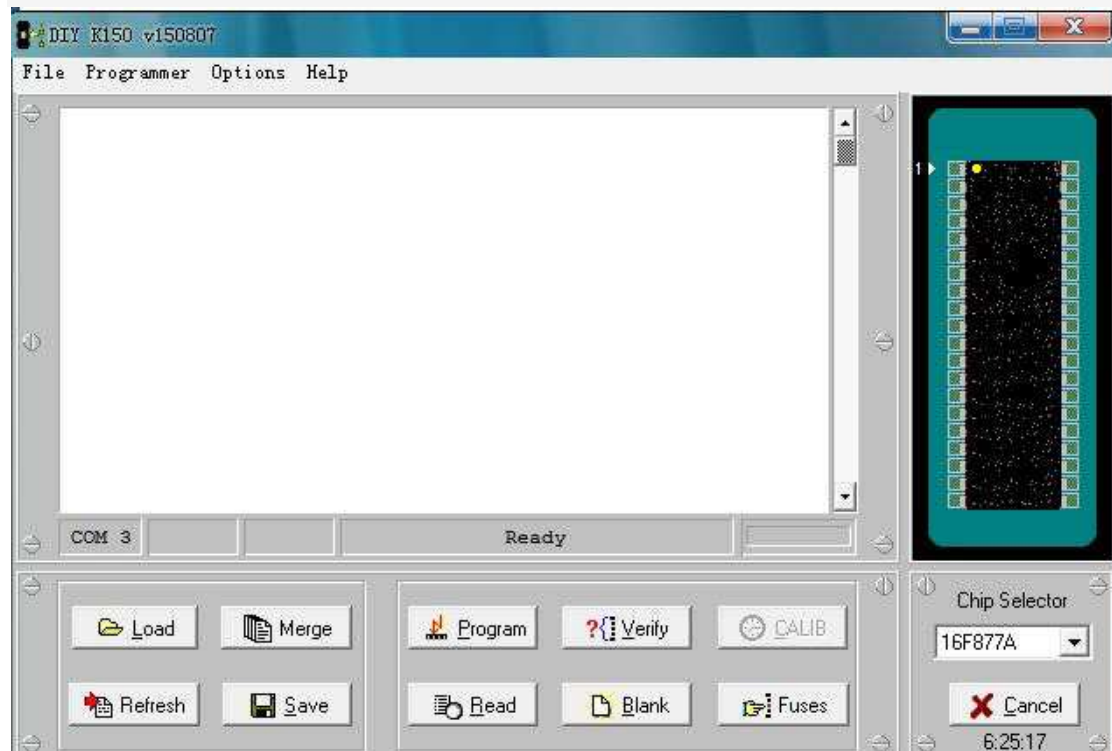
PIC K150 billion Zhenda programmer manual

5-10

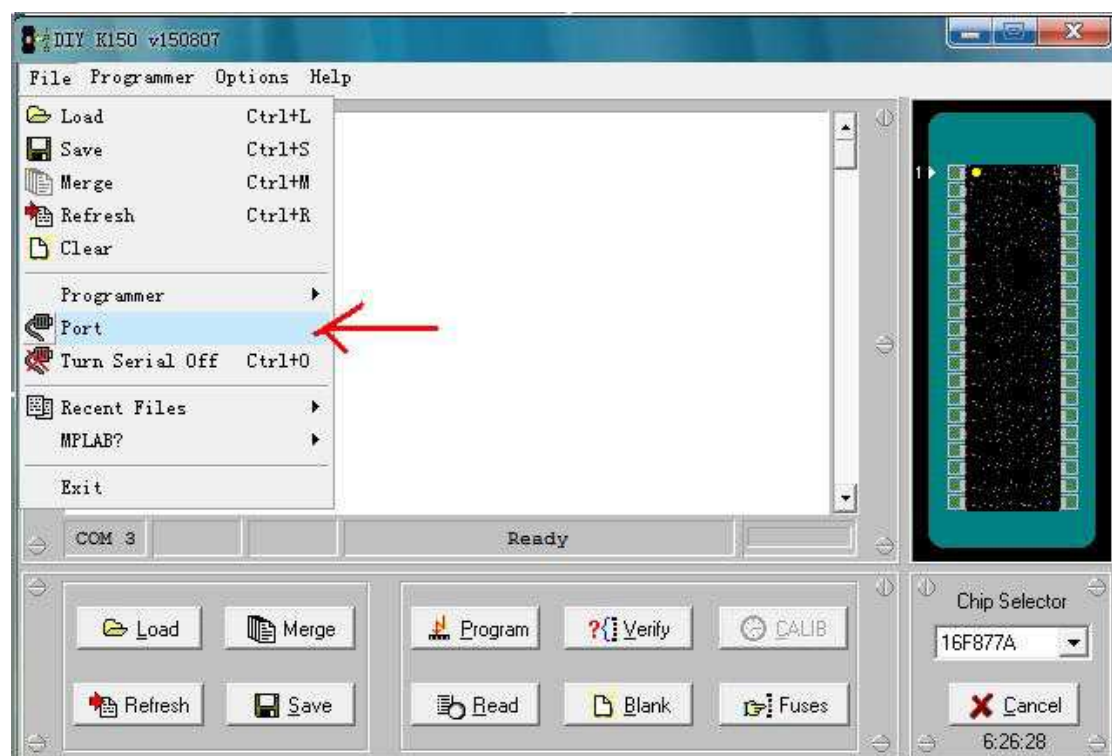
Programming software settings

Came with a USB data inserted in the USB port on the PC, and the other end is inserted in the USB port on the programmer, the

The indicator on the programmer should be bright;
Software interface

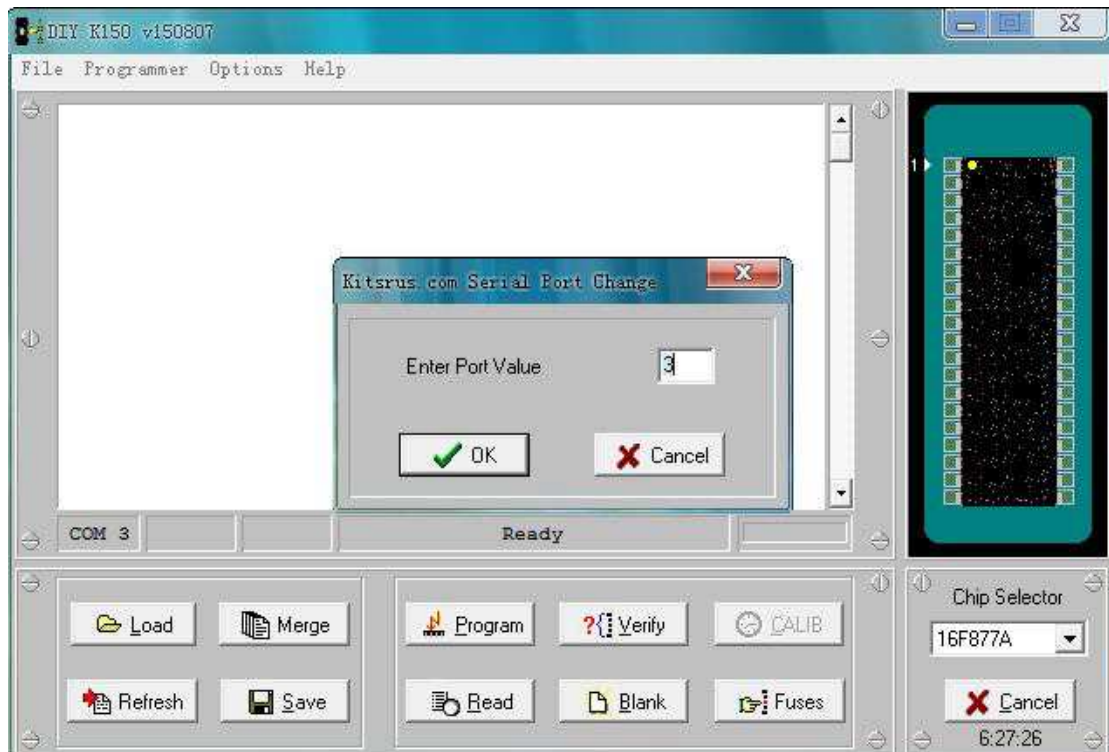


Click File-> Port into the COM port settings



PIC K150 billion Zhenda programmer manual
6-10

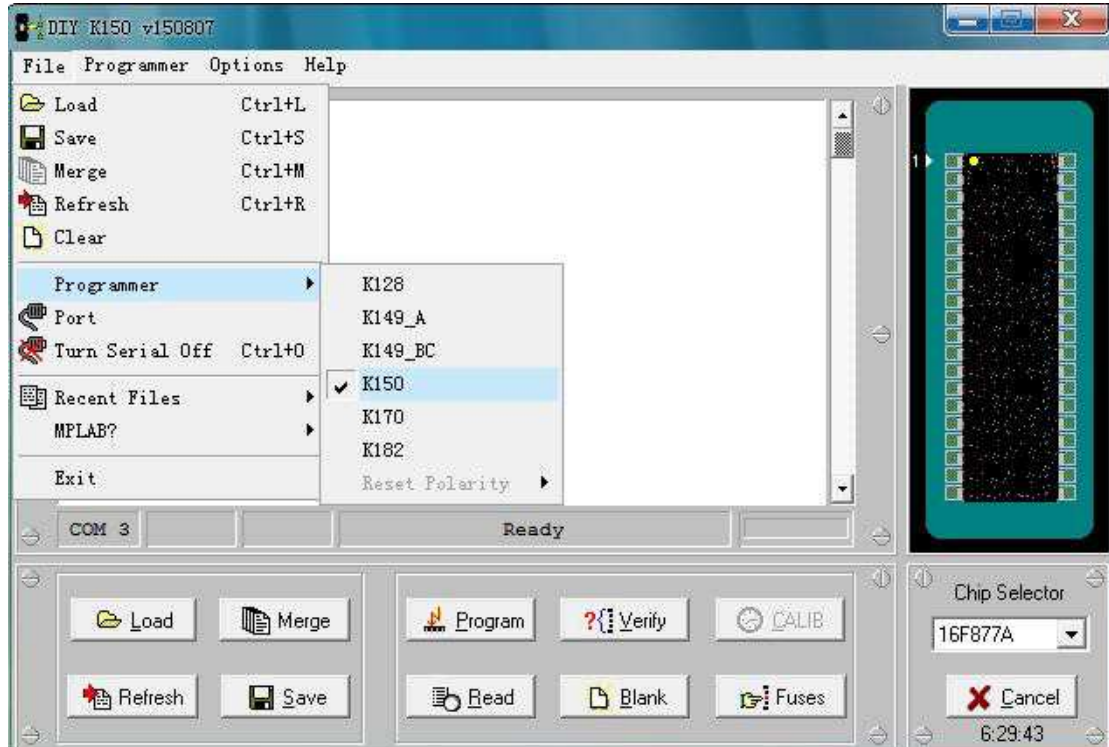
COM port settings for COM3, you may just view to the other on the actual settings.



PIC K150 billion Zhenda programmer manual

7-10

Click File-> Programmer, to select Programmer's version of the K150. The programmer set over.



Fourth, the programming operation

The basic operation of the programmer: read (Read), blank check (Blank), programming (Program), parity (Verify).

Write chip models loaded write the file, click on the Program (programming) button, you can write the program to Microcontroller.

Chip placement method

Chip placement direction is toward the pull the hand which side of the active IC Block, placed by the programming software for the right of the picture

To put.

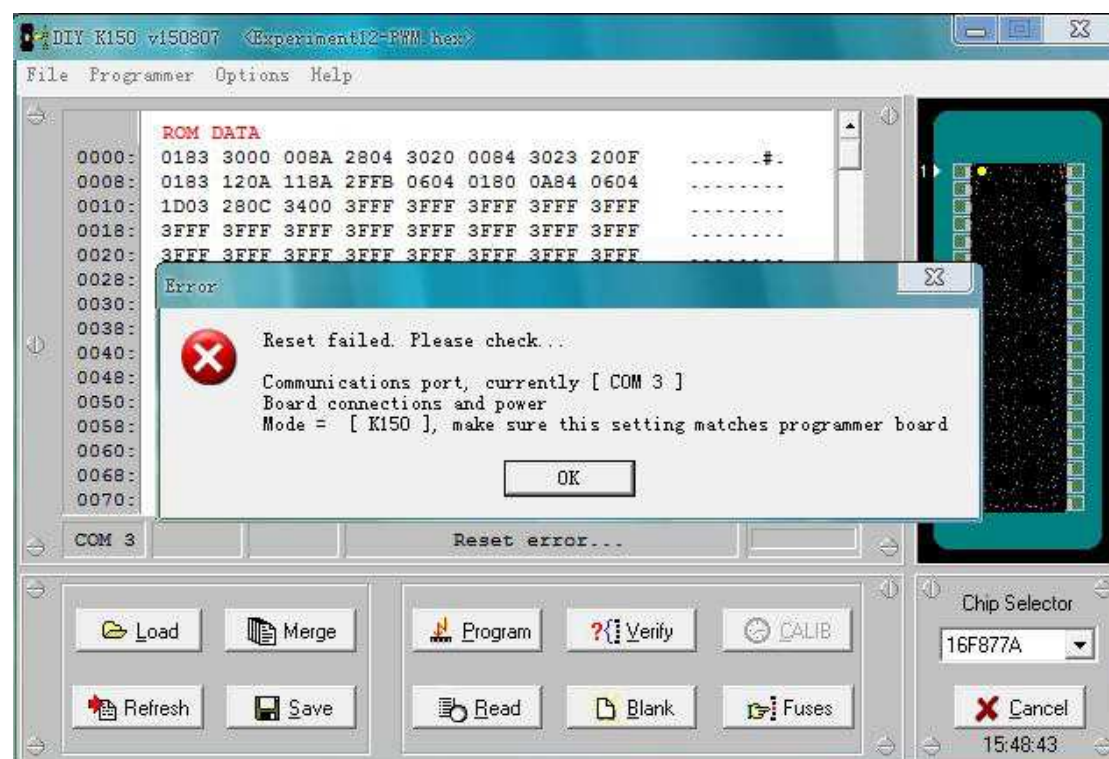
PIC K150 billion Zhenda programmer manual

8-10

: Clients often ask to summarize:

Frequently Asked Questions: Why open programming software will prompt the programmer reset fails:

As shown below:

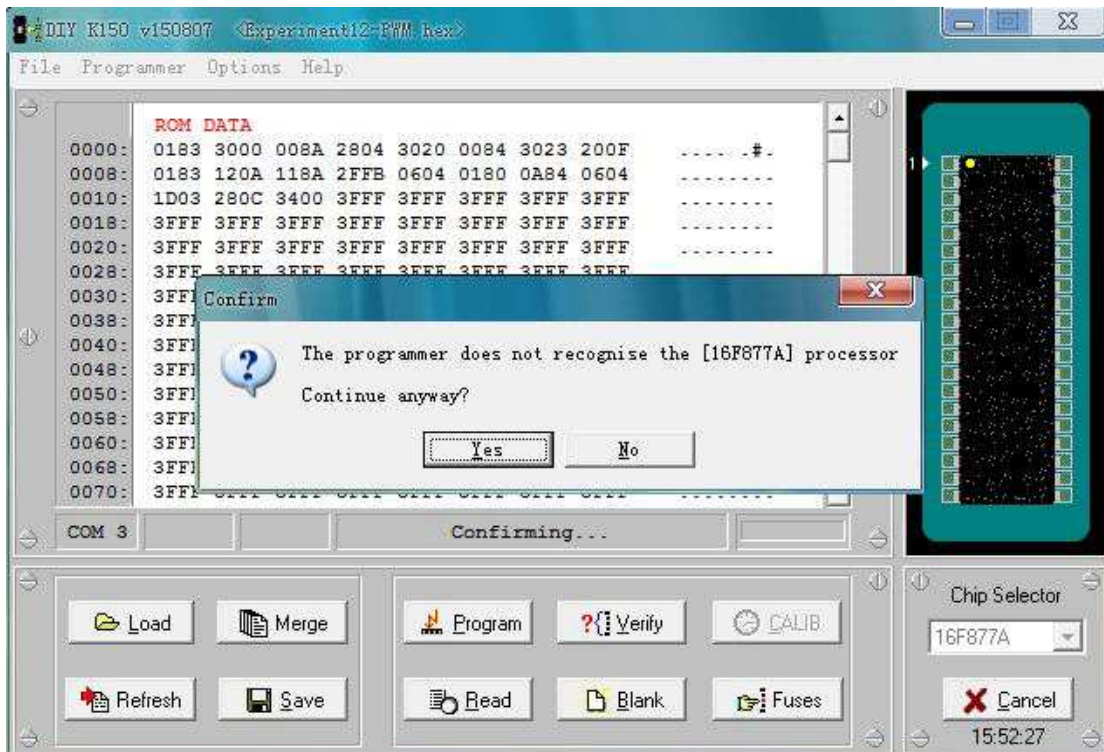


This used off software program software will reopen this error.

The right approach: Unplug the programmer reconnect the USB cable, and then open the software would not have this prompt.

FAQ: Why on programmer normal locking seat programmer with ICSP online burning may not?

As shown below:



PIC K150 billion Zhenda programmer manual

9-10

Appear on programmer normal ICSP programmer locking seat online burn may not this case because the set

The set is not correct, ICSP online burning software switch to ICSP mode.

The ICSP mode switch to the ways of looking at the following picture:



PIC K150 billion Zhenda programmer manual

10-10

Note: The definition of the ICSP interface then follow the instructions on the label on the back of the programmer board. Just then the front five, 6 which can be accessed from time then.