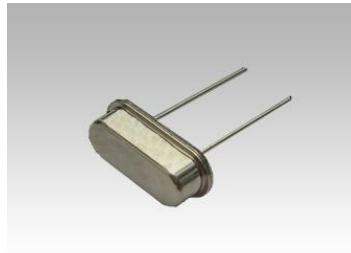




Features:

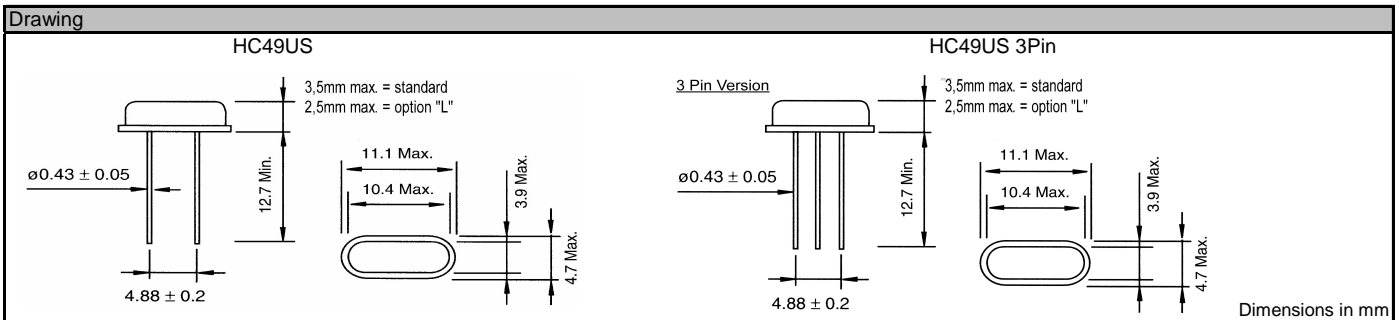
- Wide frequency range
- Low cost to performance
- Excellent for clock frequency generation
- Very low profile available



HC49US
Option: 3 Pin

Specifications			
	Symbol	HC49US	Remarks
Frequency range	f	3.2MHz ~ 40.000MHz	Fundamental mode
		30.000MHz ~ 90.000MHz	Overtone mode
Frequency tolerance, Ta=25°C	f/f	±3ppm ~ ±50ppm	Please specify
Load capacitance	C _L	5pF ~ 50pF or series	Please specify
Temperature tolerance	f/f	±3ppm ~ ±50ppm	Please specify
Temperature range	Storage temp.	T _{STG}	-40°C ~ +105°C
	Operating temp.	T _{OPR}	0°C ~ +70°C / -40°C ~ +105°C
Drive level	Maximum drive level	M _{DL}	1000µW
	Recommended drive level	R _{DL}	10µW ~ 100µW
Series resistance	R ₁	As per table	25°C ±3°C
Shunt capacitance	C ₀	7pF	Max
Insulation resistance	I _R	500M Ohm	Min
Aging	f _A	±5ppm/Year max	Others are offered

Resistance of series resonance (ESR)					
Frequency (MHz)	Mode	Ohm max	Frequency (MHz)	Mode	Ohm max
3.570 ≤ f < 3.999	Fundamental	140	8.000 ≤ f < 9.999	Fundamental	70
4.000 ≤ f < 4.999	Fundamental	110	10.000 ≤ f < 14.999	Fundamental	50
5.000 ≤ f < 5.999	Fundamental	90	15.000 ≤ f < 35.000	Fundamental	35
6.000 ≤ f < 7.999	Fundamental	80	30.000 ≤ f < 90.000	3rd OT	70



Order key								
Q	- 10.000000M	- HC49US	- F	- 30	- 50	- D	- 30	- I
Part	Frequency	Package	Mode of oscillation	Frequency tolerance	Temperature tolerance	Temperature range	Load capacitance	Option
Q=Quartz	M=MHz	HC49US	F=fund. 3=3.OT	±ppm (25°C)	±ppm (Temp. range)	A= 0°C ~ +70°C B= -10°C ~ +60°C C= -10°C ~ +70°C D= -20°C ~ +70°C E= -40°C ~ +85°C F= -40°C ~ +105°C H= -20°C ~ +80°C I = -10°C ~ +50°C	pF SR=series	3P=3Pin version L=Low height TR=Taped reeled I=Isolation washers X=Special options