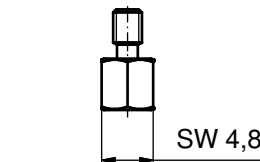
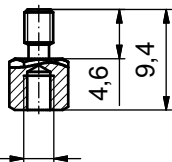
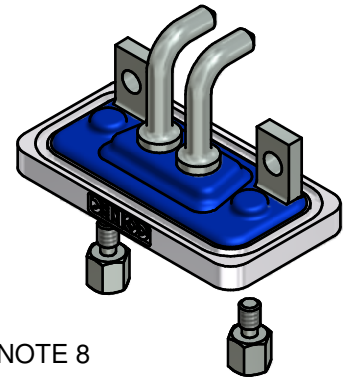
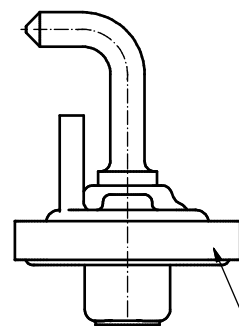
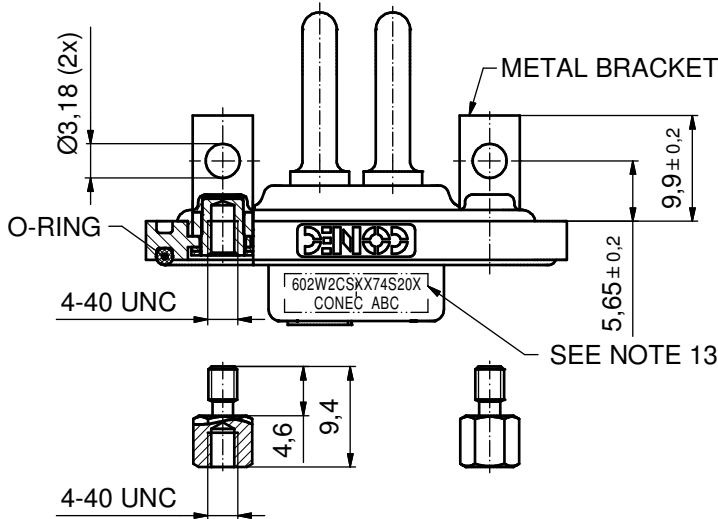
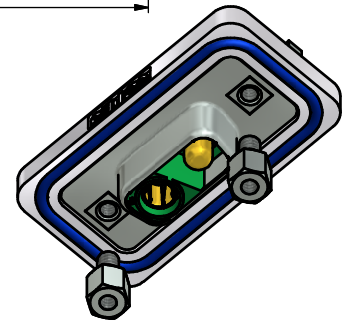
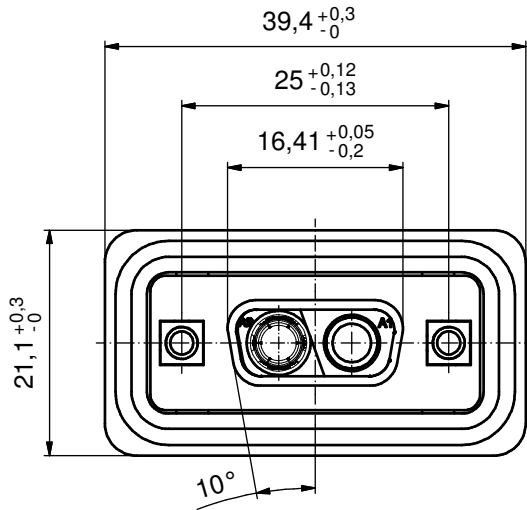
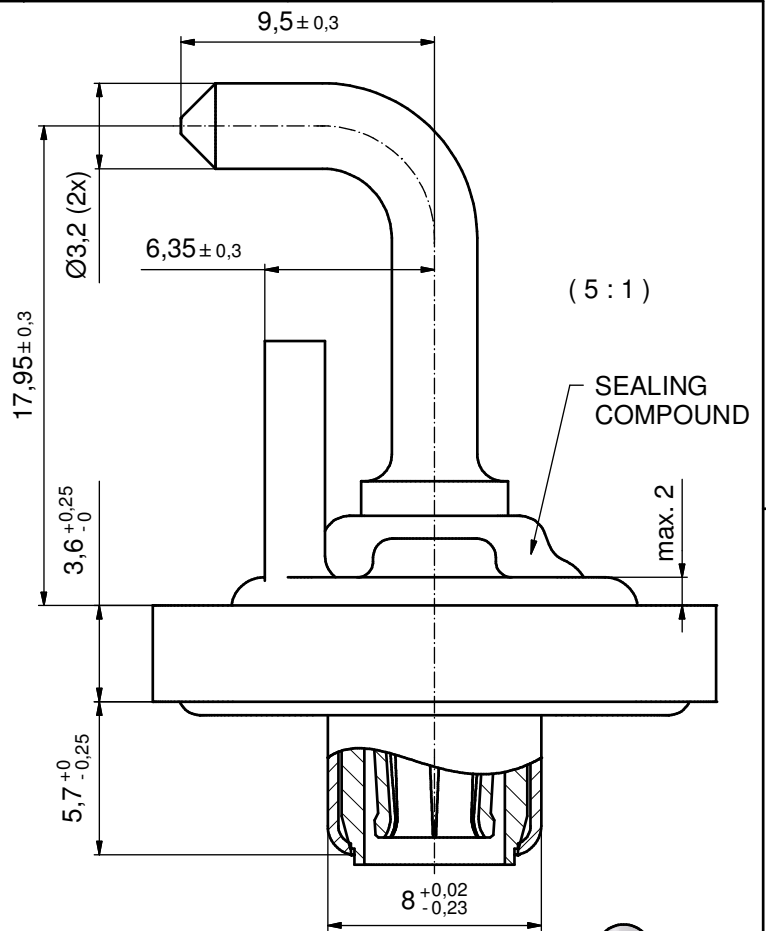


NOTES:

1. FOR WAVESOLDERING (SOLDER BATH TEMPERATURE 240°C FOR 5 SEC. AND SOLDER PREHEAT 120°C FOR 120 SEC.)
2. SEALING COMPOUND: PUR; BLUE
3. METALSHELLS: COPPER ALLOY; min. 315µm TIN over 40-80µm NICKEL
4. INSULATORS: PBT GF UL 94 V-0; GREEN
5. HIGH POWER CONTACTS 30A: COPPER ALLOY
PLATING MATING AREA: GOLD FLASH over NICKEL
PLATING TERMINATION SIDE: 160-240µm TIN over 80µm NICKEL
6. THREADED INSERTS: COPPER ALLOY; min. 200µm TIN over 80µm NICKEL
7. METAL BRACKETS: ZINC DIE CAST; 300µm COPPER / 40-120µm NICKEL/ 120-200µm TIN
8. FRAME: ZINC DIE CAST; NICKEL PLATED
9. O-RING: SILICON; BLUE
10. HEXLOCKING SCREWS: STAINLESS STEEL
11. P.C.B. HOLE DRILLINGS + RECOMMENDED PANEL CUT-OUT ON SHEET 2
12. RECOMMENDED TORQUE FOR MOUNTING SCREW
35Ncm (3,1 in.LB) / max. 40Ncm (3,5 in.LB)
13. CONNECTOR IS PART MARKED: 602W2CSXX74S20X CONEC ABC

AT ALL TIMES WATER RESISTANT CONNECTORS NOT IN USE SHOULD BE COVERED WITH A CONEC WATER RESISTANT CAP OR WATER TIGHT HOOD.



Directive 2002/95/EC
RoHS⁴
Compliant

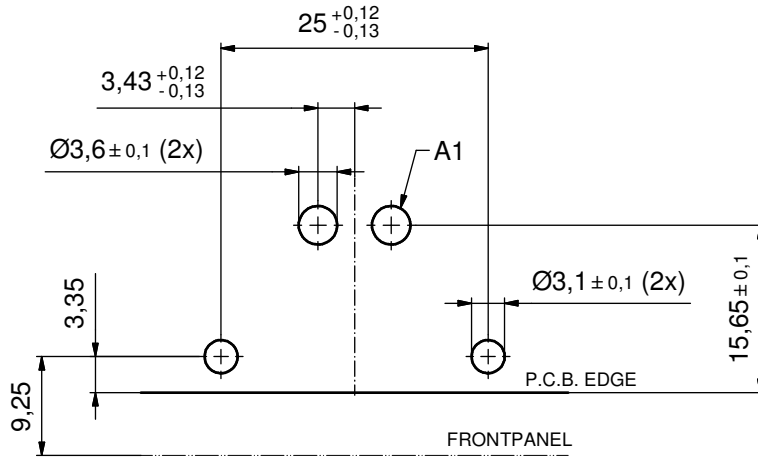
APPROVAL # FREIGABE # DEBLOCAGE # AUTORIZACION # APPROVAL	
CUSTOMER APPROVAL DATE:	
NAME:	TITLE:
COMPANY NAME:	
APPROVAL # FREIGABE # DEBLOCAGE # AUTORIZACION # APPROVAL	

THIS DRAWING MAY NOT BE COPIED OR REPRODUCED IN ANY WAY, AND MAY NOT BE PASSED ON TO A THIRD PARTY WITHOUT WRITTEN PERMISSION. OWNERSHIP AND COPYRIGHT OF CONEC GmbH				tolerance		dim. in mm	
DO NOT ALTER CAD DRAWING BY HAND				date		name	
a Origin				12.11.10		Henneboel	
rev. description				16.11.10		Fischer	
date				norm		d-old	
name				SW 4,8		CONEC®	

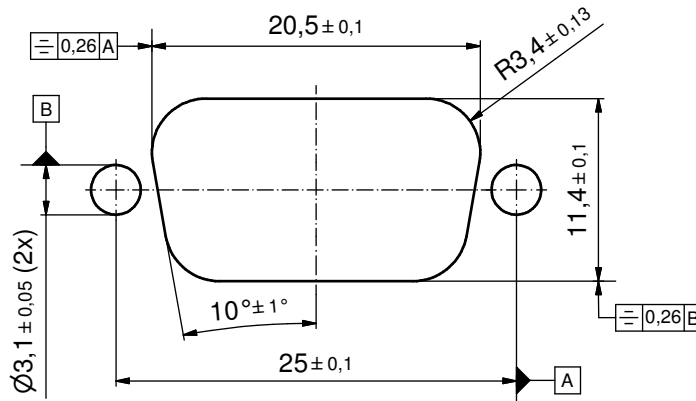
scale: 2:1 (5:1)	
material: SEE NOTES	
title: D-SUB COMBINATION FEMALE 2W2CS SOLDER CUP with threaded insert, metal bracket and hexlocking screw	
dwg no: Inventor 10	DIN-A3
15K1A749	
sh: 1	
part no: 602W2CSXX74S20X	

P.C.B. HOLE DRILLINGS

(P.C.B. TOP SIDE)



RECOMMENDED PANEL CUT-OUT



APPROVAL # FREIGABE # DEBLOCAGE # AUTORIZACION # APPROVAL	
CUSTOMER APPROVAL DATE:	
NAME:	TITLE:
COMPANY NAME:	
APPROVAL # FREIGABE # DEBLOCAGE # AUTORIZACION # APPROVAL	

THIS DRAWING MAY NOT BE COPIED OR REPRODUCED IN ANY WAY, AND MAY NOT BE PASSED ON TO A THIRD PARTY WITHOUT WRITTEN PERMISSION. OWNERSHIP AND COPYRIGHT OF CONEC GmbH DO NOT ALTER CAD DRAWING BY HAND

rev.	description	date	name
a	Origin		

tolerance		dim. in mm
date	name	
drawn	12.11.10	Henneboel
appd.	16.11.10	Fischer
norm		
d-old		

CONEC®

scale:	2:1	
material:	SEE SHEET 1	
title:	P.C.B. HOLE DRILLINGS RECOMMENDED PANEL CUT-OUT D-SUB COMBINATION FEMALE 2W2CS	
dwg no:	Inventor 10	DIN-A3
	15K1A749	sh: 2
part no:	SEE SHEET 1	