

Working Display Board received from confident Seller

<https://de.aliexpress.com/item/3-5-inch-HDMI-LCD-TFT-Touchscreen-Display-1920-1080-with-Acrylic-transparent-Case-for-Raspberry/32790283706.html>

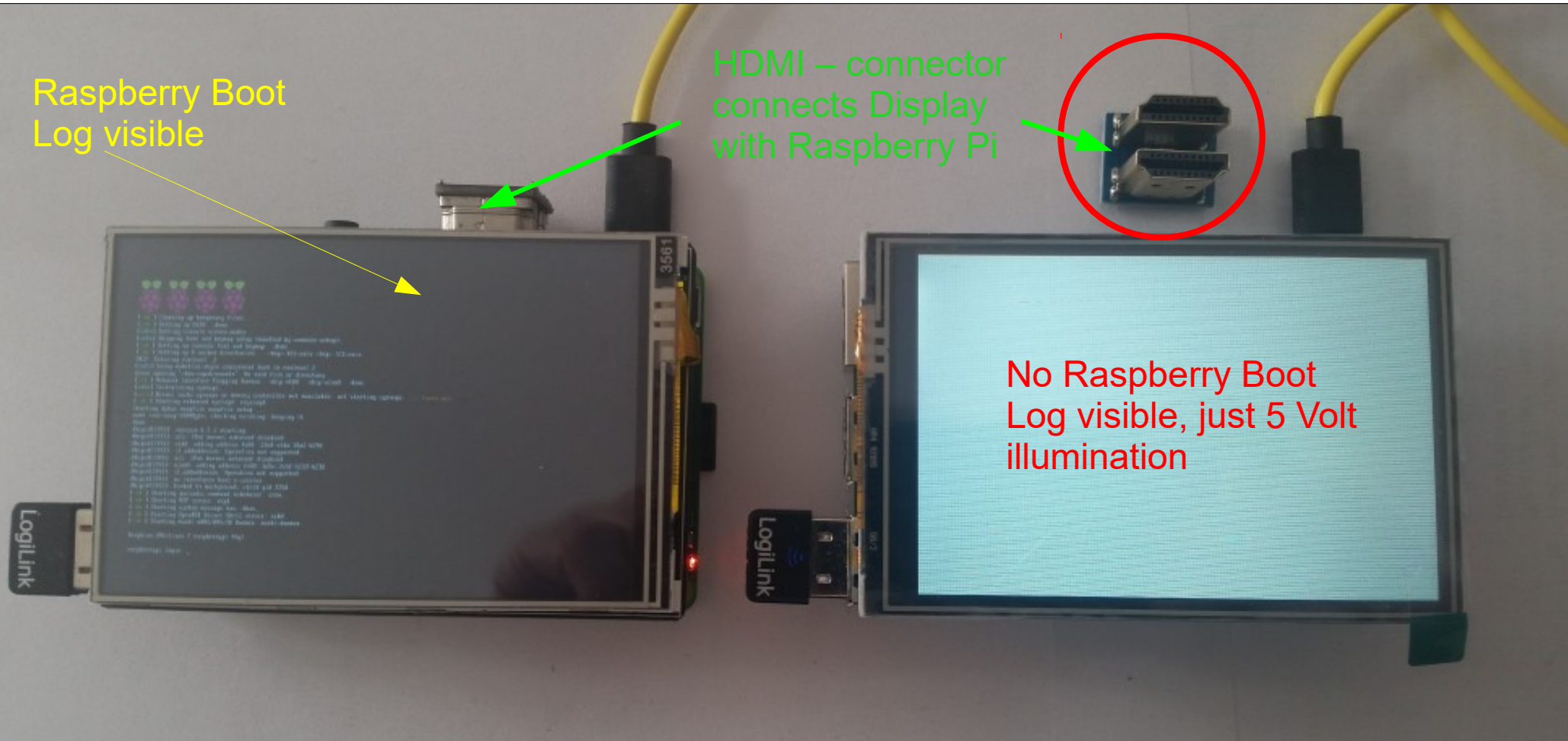
Non Working Display Board from Disput Seller

<https://de.aliexpress.com/item/3-5-zoll-Raspberry-pi-2-3-LCD-display-touchscreen-HDMI-adapter-schraubendreher-f-r/32850029922.html>

Raspberry Boot Log visible

HDMI – connector connects Display with Raspberry Pi

No Raspberry Boot Log visible, just 5 Volt illumination



Working Display Board received from confident Seller

<https://de.aliexpress.com/item/3-5-inch-HDMI-LCD-TFT-Touchscreen-Display-1920-1080-with-Acrylic-transparent-Case-for-Raspberry/32790283706.html>

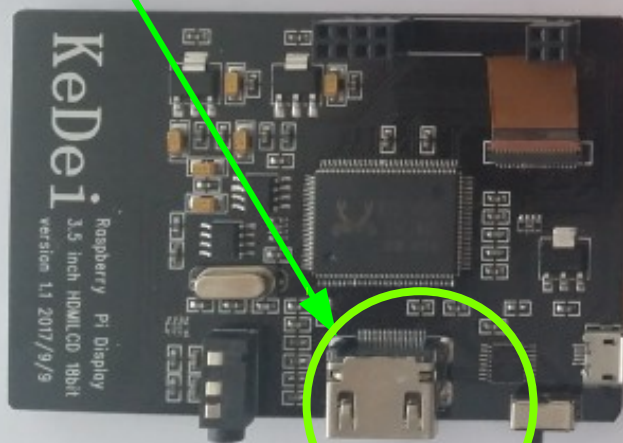
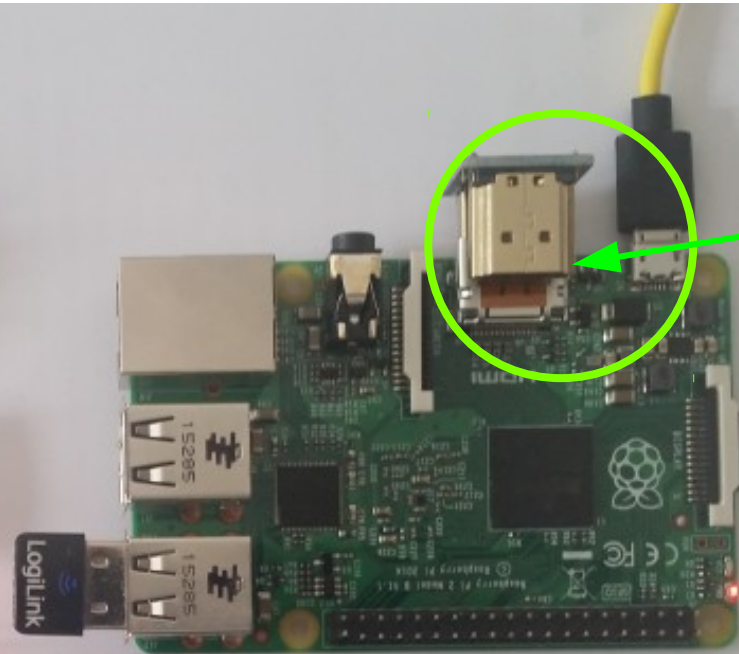
Non Working Display Board from Disput Seller

<https://de.aliexpress.com/item/3-5-zoll-Raspberry-pi-2-3-LCD-display-touchscreen-HDMI-adapter-schraubendreher-f-r/32850029922.html>

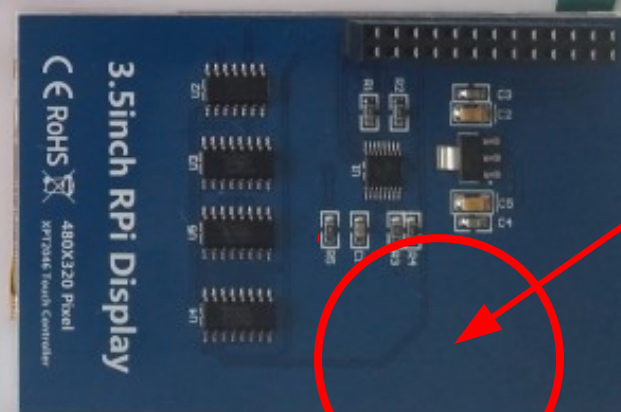
Male HDMI Connector correctly fits with female HDMI – Plug on Display Board



Male HDMI Connector was part of the delivery



Corresponding Female HDMI Plug is missing on Display Board



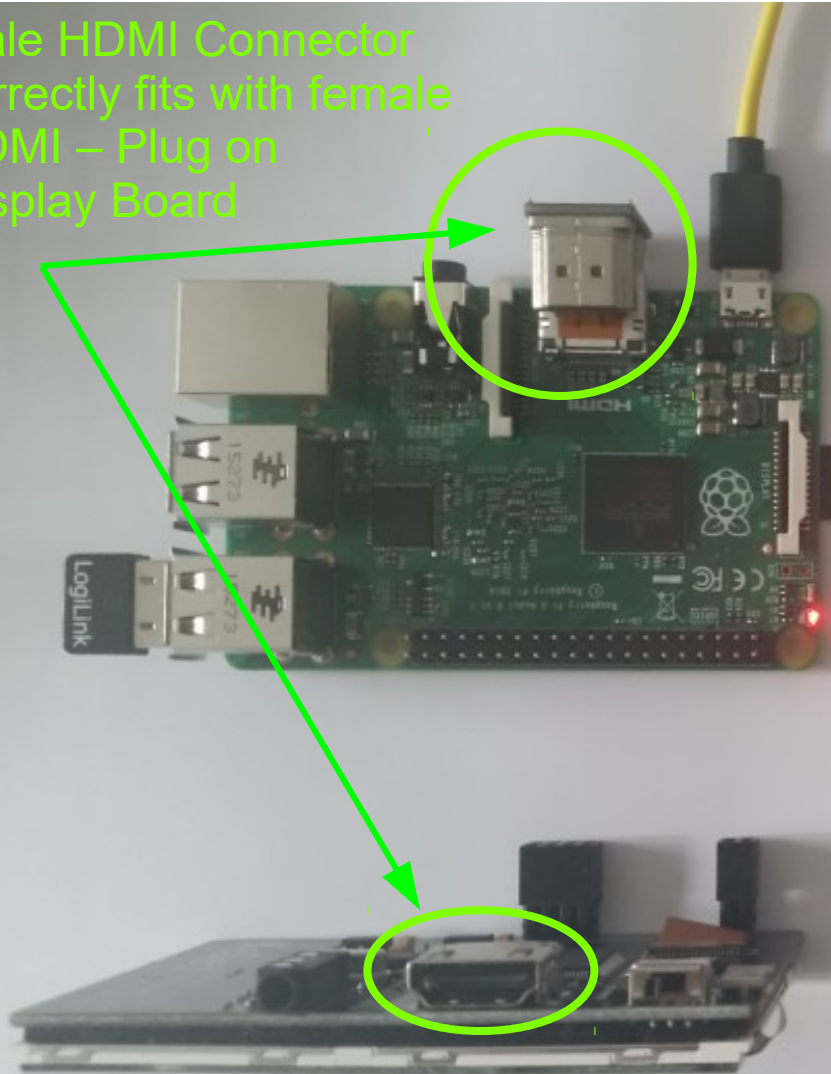
Working Display Board received from confident Seller

<https://de.aliexpress.com/item/3-5-inch-HDMI-LCD-TFT-Touchscreen-Display-1920-1080-with-Acrylic-transparent-Case-for-Raspberry/32790283706.html>

Non Working Display Board from Disput Seller

<https://de.aliexpress.com/item/3-5-zoll-Raspberry-pi-2-3-LCD-display-touchscreen-HDMI-adapter-schraubendreher-f-r/32850029922.html>

Male HDMI Connector correctly fits with female HDMI – Plug on Display Board



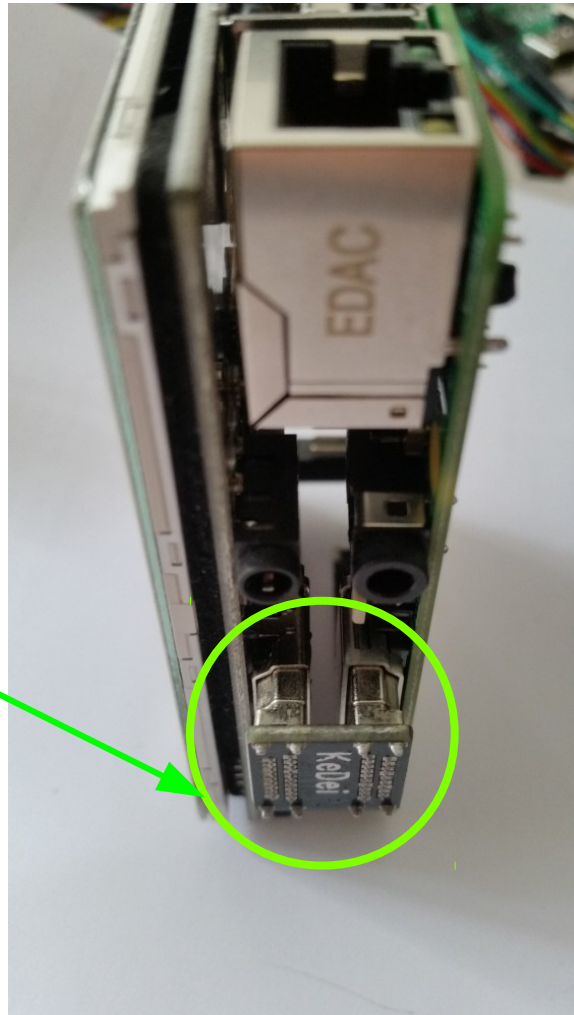
Male HDMI Connector was part of the delivery



Corresponding Female HDMI Plug is missing on Display Board

Working Display Board received from confident Seller

<https://de.aliexpress.com/item/3-5-inch-HDMI-LCD-TFT-Touchscreen-Display-1920-1080-with-Acrylic-transparent-Case-for-Raspberry/32790283706.html>

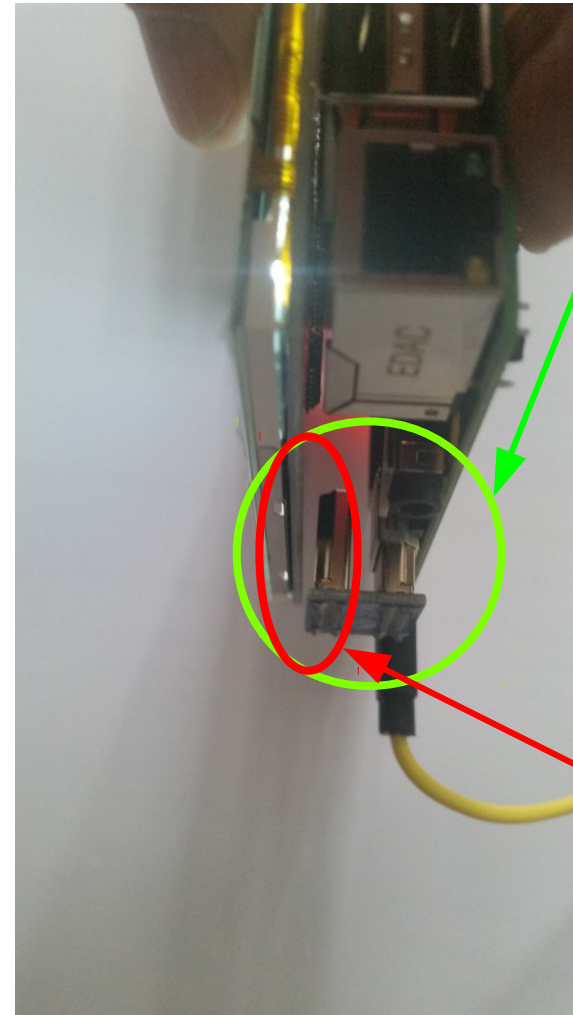


HDMI Connection is full functional and working

Non Working Display Board from Disput Seller

Page 4

<https://de.aliexpress.com/item/3-5-zoll-Raspberry-pi-2-3-LCD-display-touchscreen-HDMI-adapter-schraubendreher-f-r/32850029922.html>



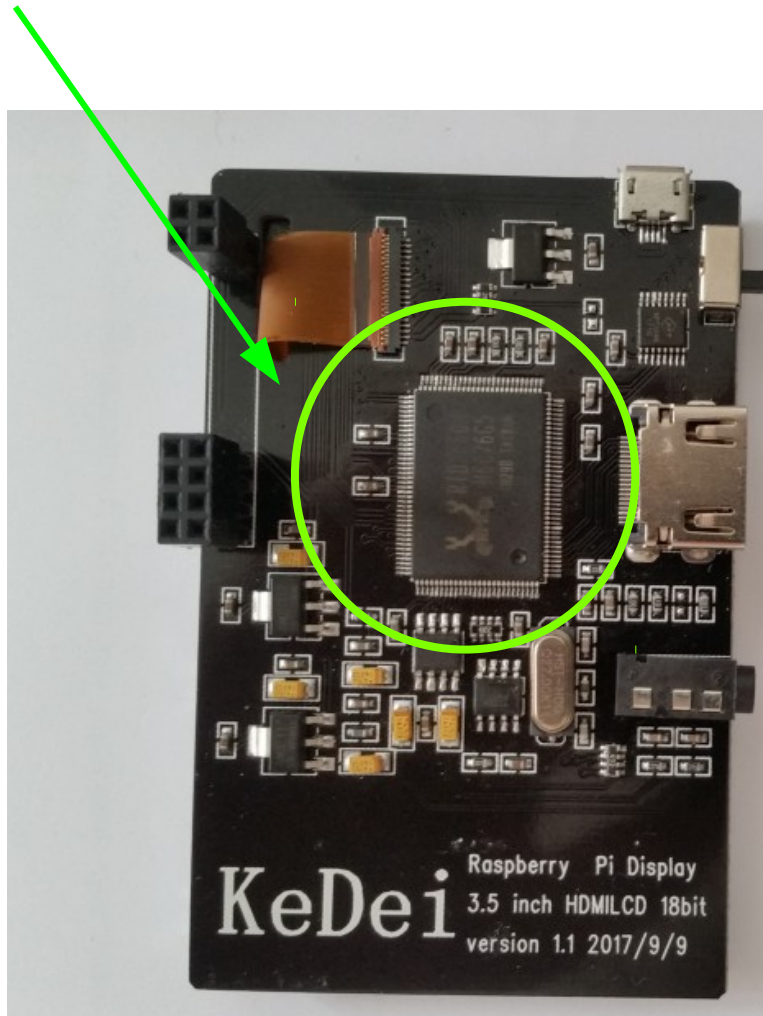
Male HDMI Connector was part of the delivery

Corresponding Female HDMI Plug is missing on Display Board

Working Display Board received from confident Seller

<https://de.aliexpress.com/item/3-5-inch-HDMI-LCD-TFT-Touchscreen-Display-1920-1080-with-Acrylic-transparent-Case-for-Raspberry/32790283706.html>

Display Graphic Processor Chip



Non Working Display Board from Disput Seller

<https://de.aliexpress.com/item/3-5-zoll-Raspberry-pi-2-3-LCD-display-touchscreen-HDMI-adapter-schraubendreher-f-r/32850029922.html>

Display Graphic Processor Chip is missing!
This is FRAUD by evidence

