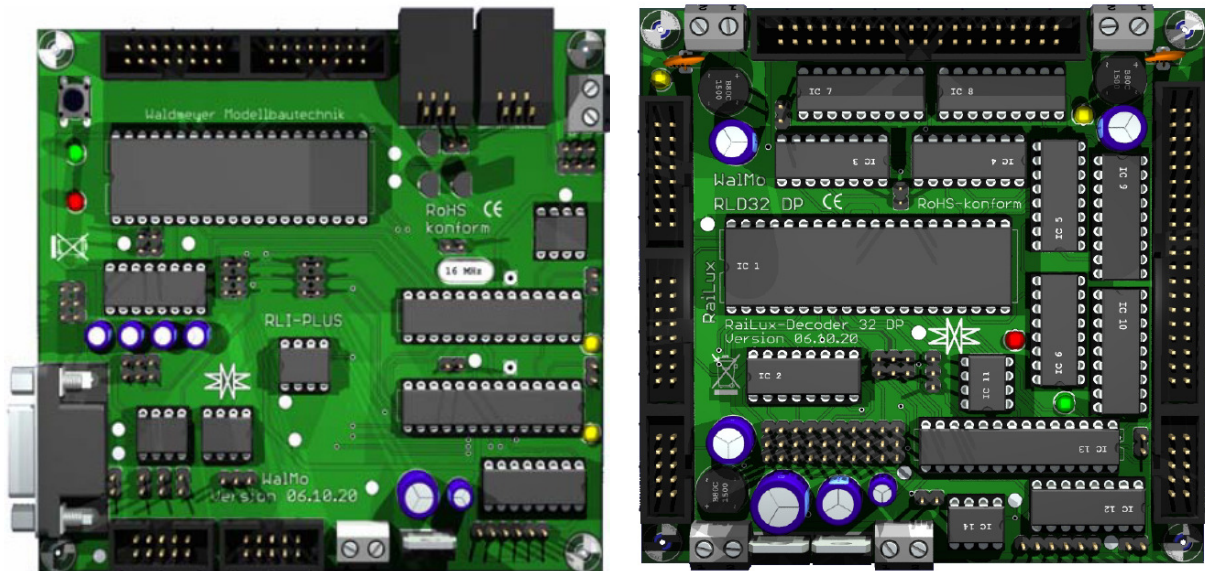


# Railux Kurzhandbuch

---

## Programmieranleitung Railux Bausteine



# Railux Kurzhandbuch

---

## Programmieren RLD 32

ATmega 8

ATmega 32

## ~~Programmieren RLI~~

~~ATmega 162~~

~~ATmega 8 DCC~~

~~ATmega 8 S88~~

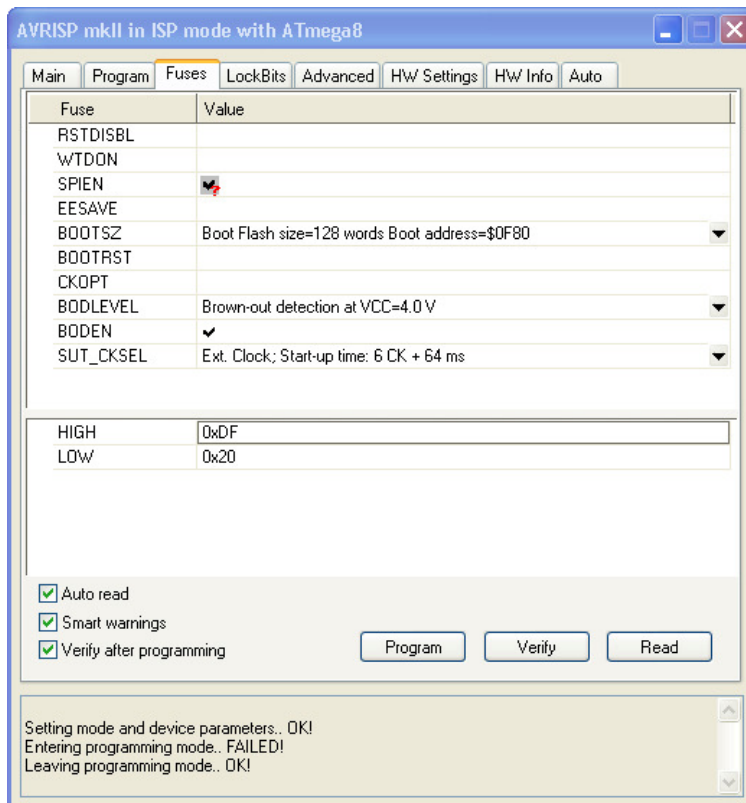
## Programmieren RDU 32

ATmega 32

# Railux Kurzhandbuch

## Programmieren RLD 32

### ATmega 8



#### Einstellungen Main

Device and Signature Bytes:  
*ATmega8*

#### Einstellungen Program

Flash:

*RLD32S.hex*

EEPROM:

*RLD32S.eep*

#### Einstellungen Fuses

HIGH:

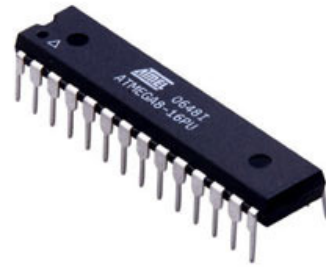
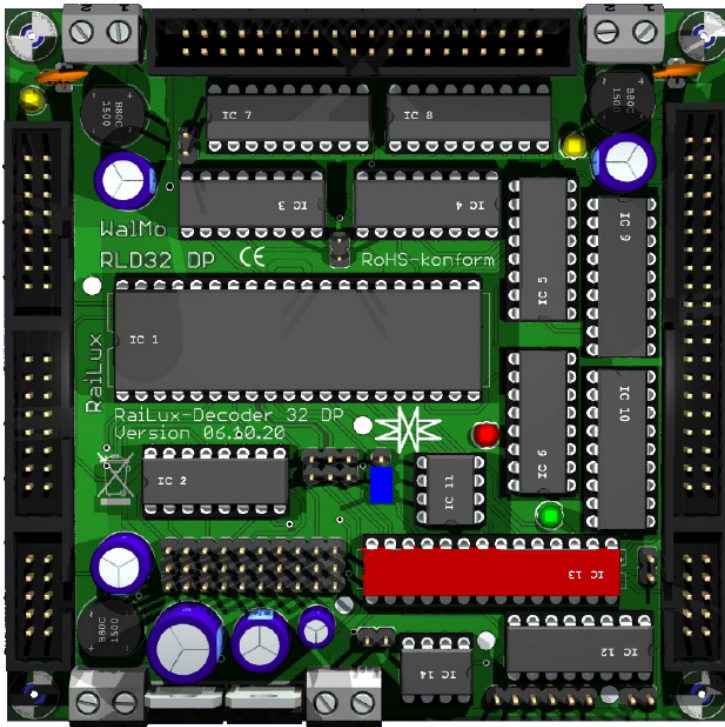
*0xDF*

LOW:

*0x20*

# Railux Kurzhandbuch

---

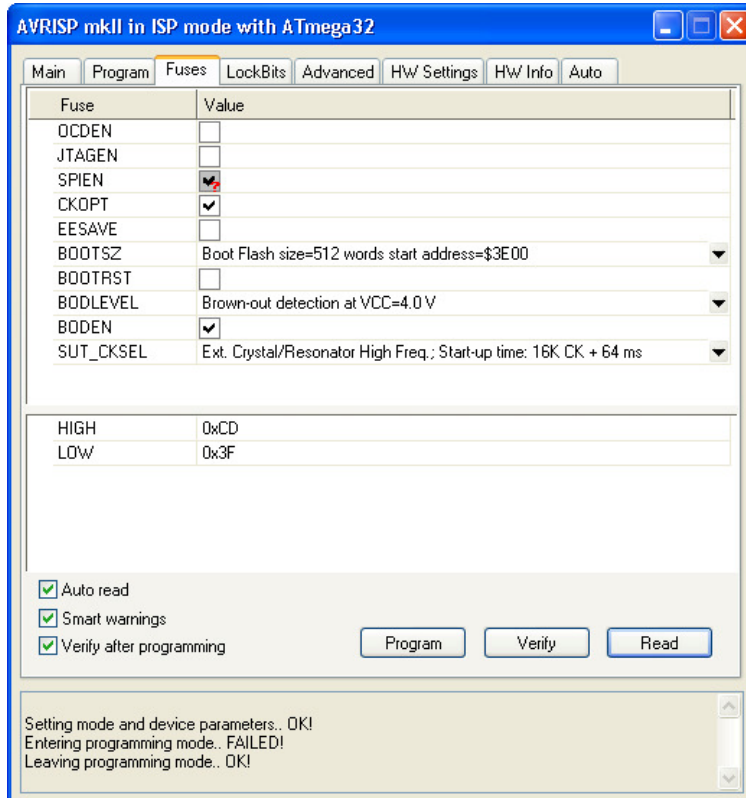


**Bestellnummer Reichelt:**  
ATMEGA 8-16 DIP

# Railux Kurzhandbuch

## Programmieren RLD 32

### ATmega 32



#### Einstellungen Main

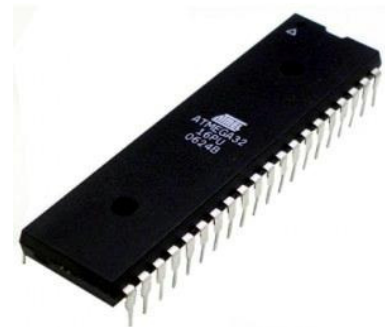
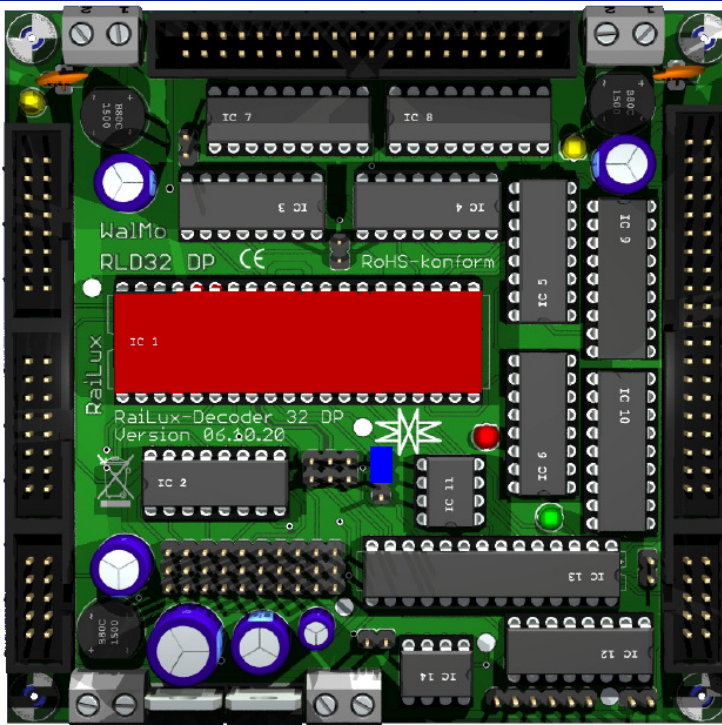
Device and Signature Bytes:  
*ATmega32*

#### Einstellungen Program

Flash:  
*RLD32M.hex*  
EEPROM:  
*RLD32M.eep*

#### Einstellungen Fuses

HIGH:  
*0xCD*  
LOW:  
*0x3F*



#### Bestellnummer Reichelt:

ATMEGA 32-16 DIP