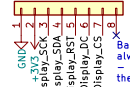
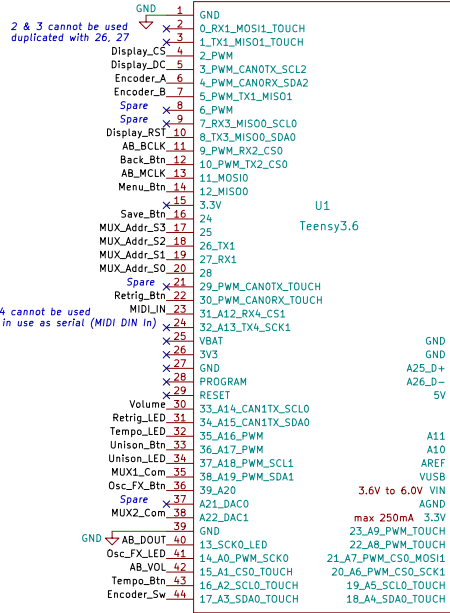


This doesn't appear on PCB
Unused SPI means that the SD card
and optional memory chip won't
be used.

J6 SPI Display



0.96" IPS Colour Display
160 x 80 SPI Interface



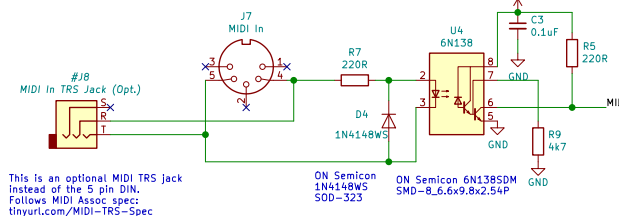
2 & 3 cannot be used
duplicated with 26, 27

A13 TX4 cannot be used
RX4 is in use as serial (MIDI DIN in)

3.6V to 6.0V VIN
max 250mA 3.3V
AGND

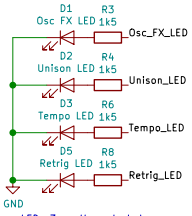
All resistors and capacitors 0805

PCB mount DIN 180deg 5 pin socket

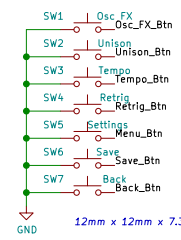


This is an optional MIDI TRS jack
Instead of the 5 pin DIN.
Follows MIDI Assoc spec:
tinyurl.com/MIDI-TRS-Spec

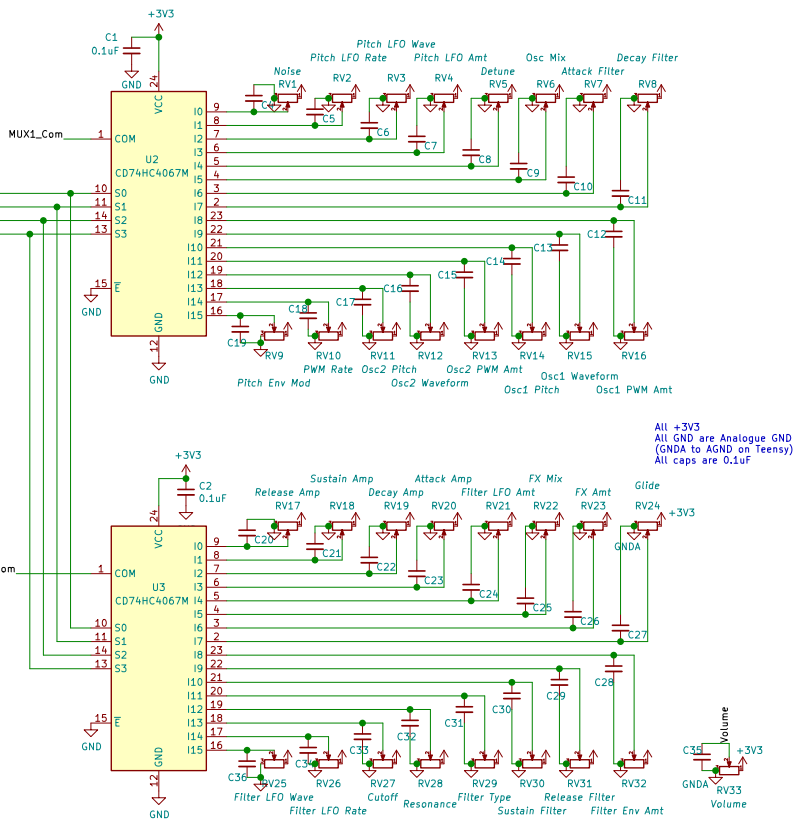
ON Semiconductor 1N4148WS
SOD-323
ON Semiconductor 6N138SDM
SMD-8.6x9.8x2.54P



LEDs 3mm through-hole,
low current type 1-2mA

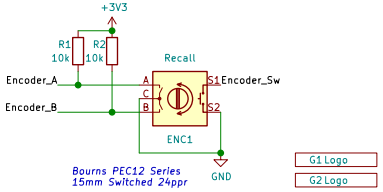


12mm x 12mm x 7.3mm type



Texas Instruments CD4067BM96
SOIC-24_7.5x15.4x1.27P

Bourns PTV09A Series / Alpha RV09 Series
PTV09A-4015U-103 15mm 10K



Bourns PEC12 Series
15mm Switched 24ppr

G1 Logo
G2 Logo

Electro Technique		
Sheet: /		
File: TSynth2.sch		
Title: TSynth		
Size: A3	Date: 2020-04-17	Rev: 1.1
KiCad E.D.A. kicad (5.1.4)-1		Id: 1/1