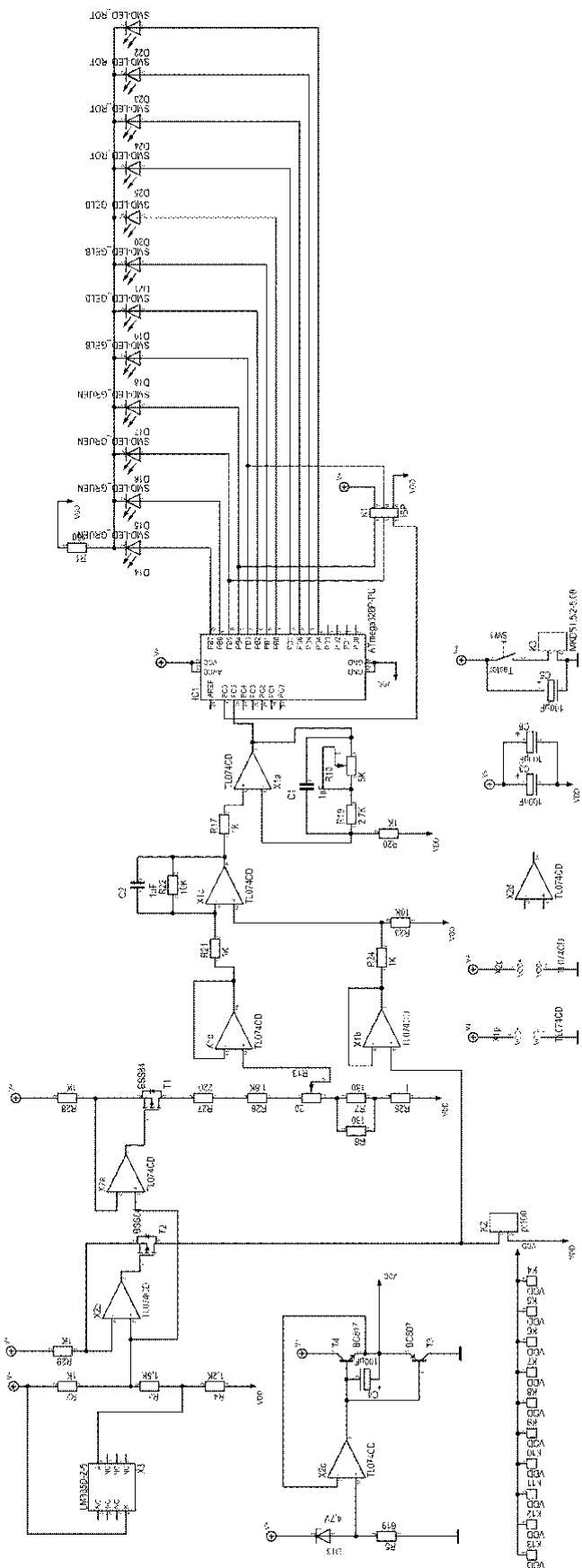
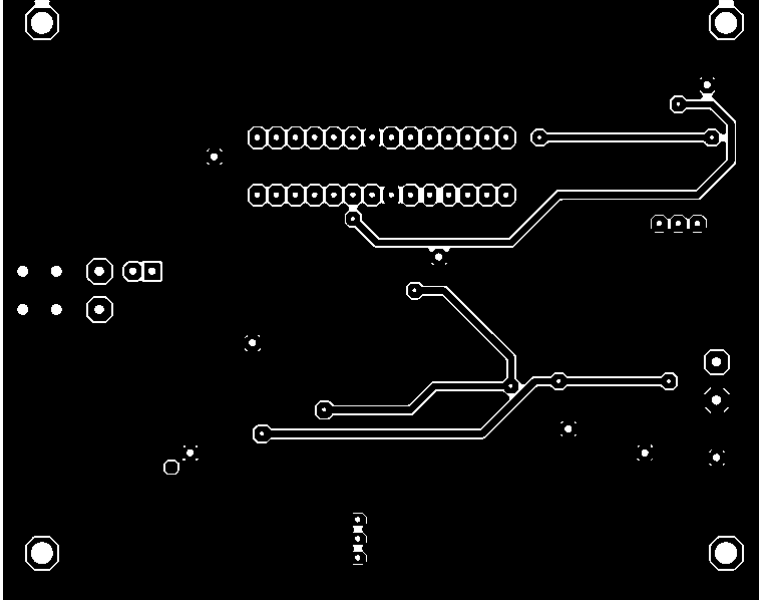


Schaltplan

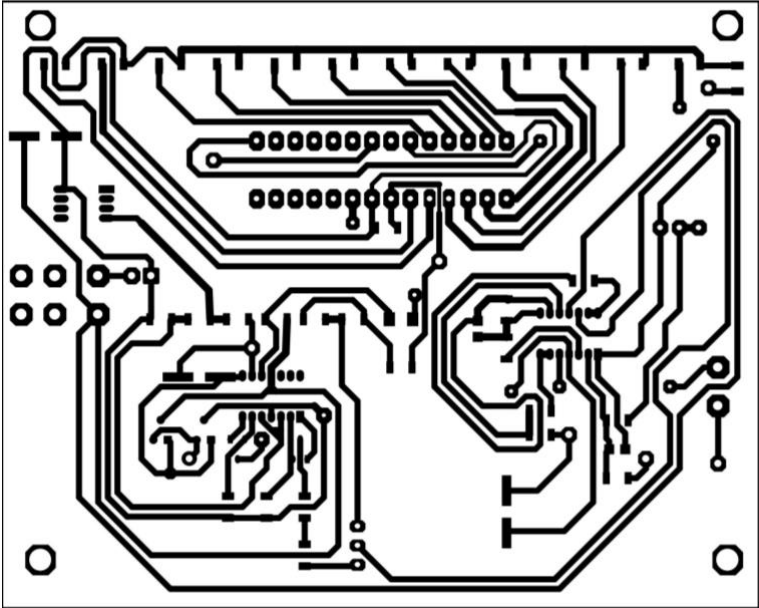


Layout

Oben

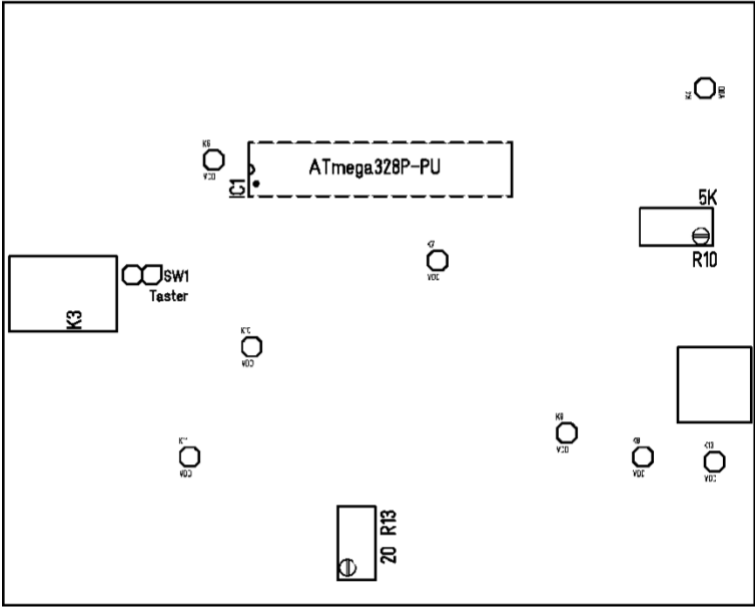


Unten

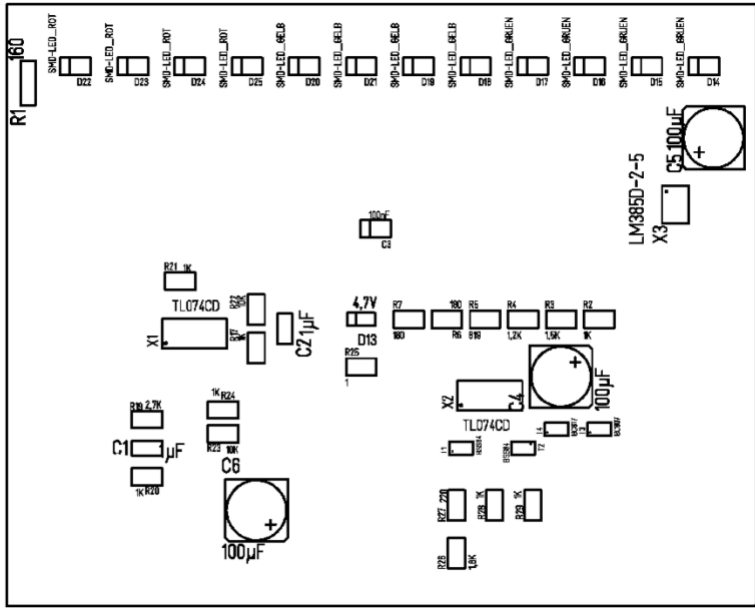


Bestückung Seite

Oben



Unten



Stückliste

Pos	Name	Wert	Gehäuse
1	C1/C2	1µF	0805
2	C3	100nF	0805
3	C4/C5/C6	100 µF	SMD_R8X6,5_ELKO
4	D13	4,7V	MINIMELF_DIODE
5	D14/D15/ D16/D17	SMD-LED_GRUEN	1206-D
7	D18/D19/ D20/D21	SMD-LED_GELB	1206-D
8	D22/D23/ D24/D25	SMD-LED_ROT	1206-D
9	IC1	ATmega328P-PU	DIL28
10		Socket	DIL28
11	PT100	PT100	MKDS1,5
12	9V Block Clip		
13	K4 bis K13	Durchkontaktierung	
14	R1	160 Ohm	0805
15	R2/R17/R20/ R21/R24/R28/ R29	1k	0805
16	R3	1,5k	0805
17	R4	1,2k	0805
18	R5	619 Ohm	0805
19	R6/R7	180 Ohm	0805
20	R10	5K	Trim Potentiometer VISHAY
21	R13	20	Trim Potentiometer VISHAY
22	R19	2,7k	0805
23	R22/R23	10k	0805
24	R25	1 Ohm	0805
25	R26	1,8k	0805
26	R27	220	0805
27	Taster		
28	T1/T2	BSS84	SOT23/3
29	T3	BC807	SOT23/3
30	T4	BC817	SOT23/3
31	X1/X2	TL074CD	SOIC14_WB3,9_P1,27
32	X3	LM385D-2-5	SO8/WB3,9/P1,27