

P | Cabling

C6Amodul / C6Amodul K

AWG 26/1 - 22/1, AWG 26/7 - 22/7

(de) Montagehinweis für den Installateur

(en) Mounting note for the installer

(fr) Notice d'installation pour l'installateur

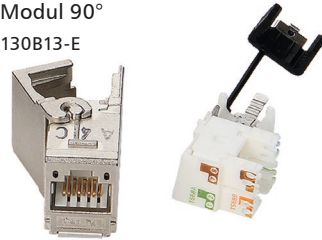
Modul 270°

130B12-E



Modul 90°

130B13-E



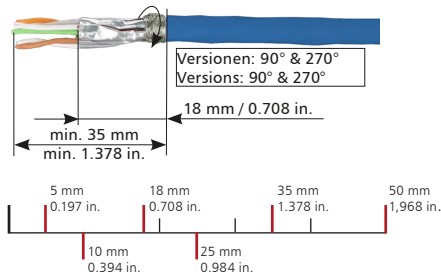
Keystone 270°

130B22-E



Keystone 90°

130B23-E

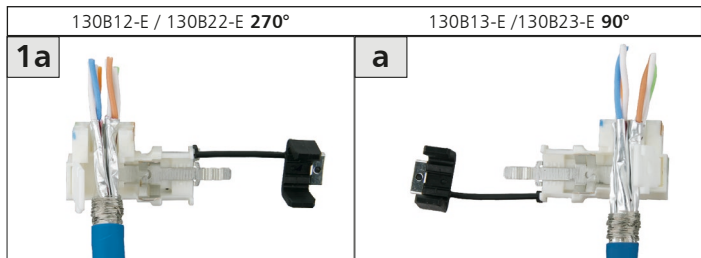


i HINWEIS / NOTE / NOTICE

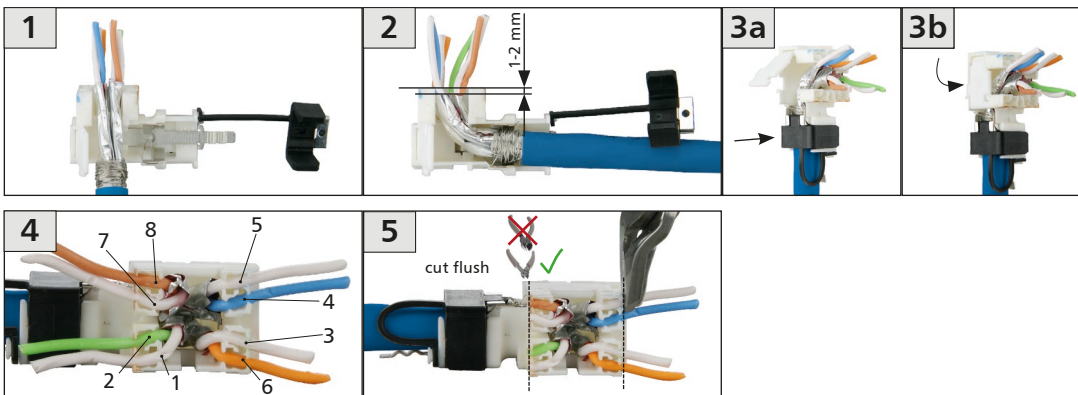
- (de) **Kabel AWG 26!**
Schirmgeflecht 5 mm über den Kabelmantel aufbringen.
- (en) **Cable AWG 26!**
Wrap the braided shield 5 mm over the cable sheath.
- (fr) **Câble AWG 26 !**
Enrouler le blindage tressé 5 mm autour du gainage.

Anschlussbelegung / PIN assignments
Affectation des fils aux contacts

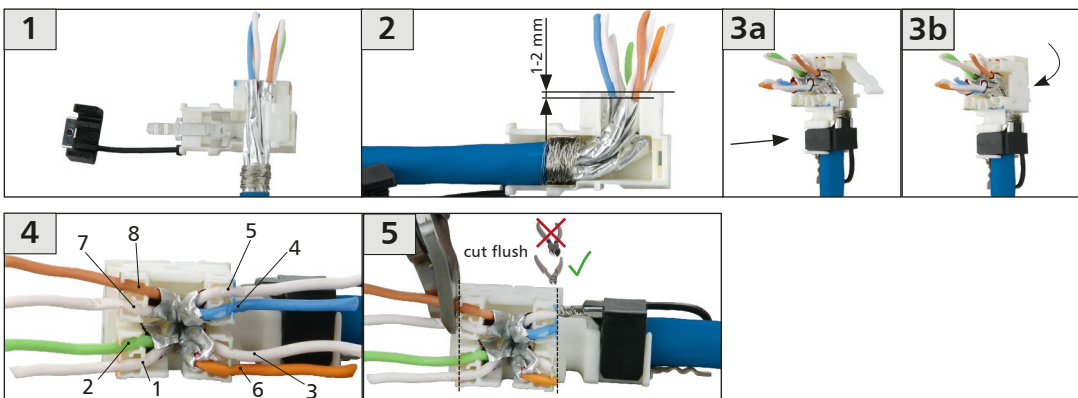
PIN Nr. / No.	T568A	T568B	Profinet
1	WH-GN	WH-OG	YE
2	GN	OG	OG
3	WH-OG	WH-GN	WH
4	BU	BU	-
5	WH-BU	WH-BU	-
6	OG	GN	BU
7	WH-BN	WH-BN	-
8	BN	BN	-



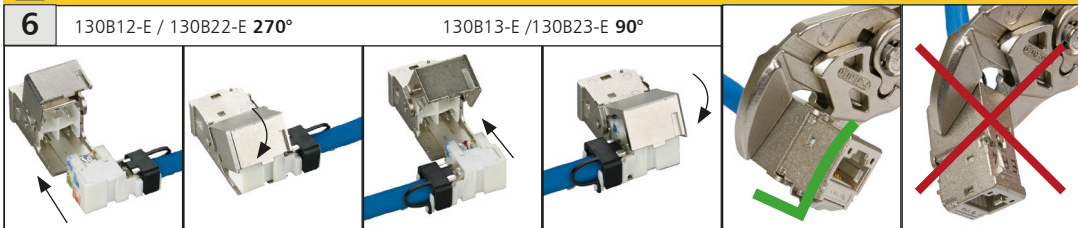
- de** Kabelmontage Modul/Keystone 270°
- en** Cable Termination Module/Keystone 270°
- fr** Installation d'un câble Module/Keystone 270°



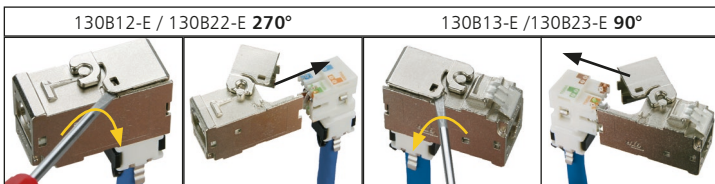
- de** Kabelmontage Modul/Keystone 90°
- en** Cable Termination Module/Keystone 90°
- fr** Installation d'un câble Module/Keystone 90°



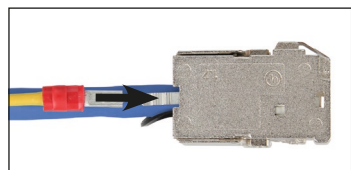
i Nicht schräg einstecken! - Do not plug diagonally! - Ne pas insérer en diagonal !



Demontage / Disassembly / Démontage



Potentialausgleich
Potential equalisation
Compensation de potentiel



Optionaler Potentialausgleich mit 2,8 mm Flachstecker
Optional potential equalisation with 2.8 mm flat plug
Compensation de potentiel optionnelle par languette à 2,8 mm