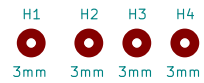
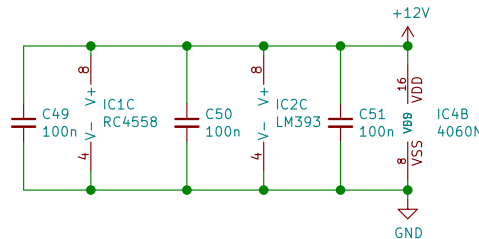


Änderungen geg. Original-Schaltung:

1. TDA1572 , statt TDA1072
2. Quarz X1 10MHz , original 5MHz
3. Teiler :128 statt :64
4. R8 220K statt 100K



file:///home/monitor/Cad/Kicad/Dcf77\_Elrad/bom/ibom.html

Sheet: /	
File: Dcf77_Elrad.sch	
<b>Title: DCF77-RX nach Elrad 4/88</b>	
Size: A4	Date: 2021-12-04
KiCad E.D.A. kicad 5.1.8-5.1.8	Rev: 1.0
	Id: 1/1