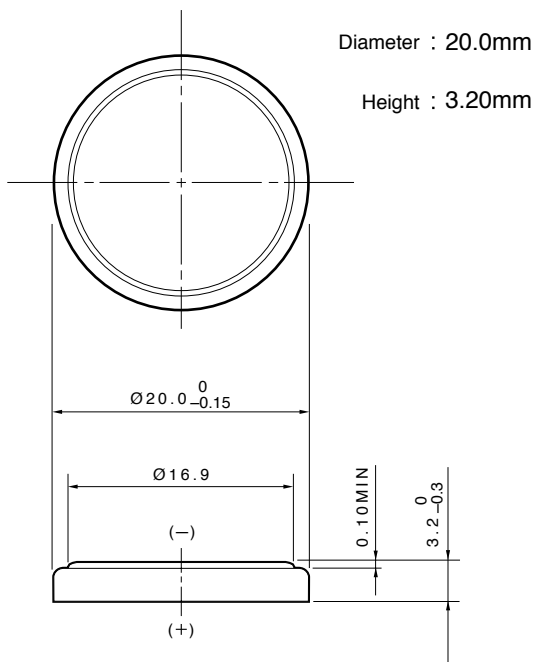


Lithium Manganese Dioxide Battery **CR2032**

■ Dimensions (mm)



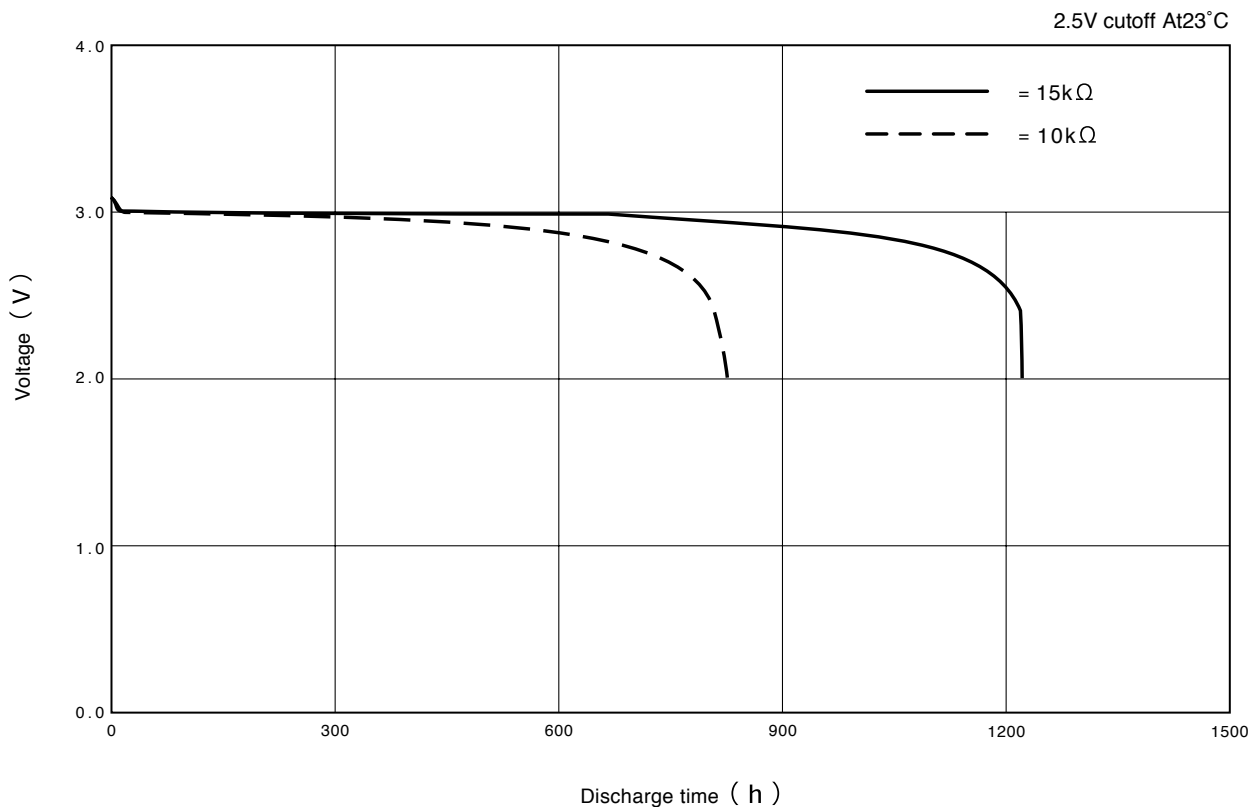
■ Specifications

Nominal Voltage	<b>3V</b>
Nominal Capacity (2.5V cutoff)	<b>220mAh</b>
Recommended Continuous Drain	<b>0.3mA</b>
Recommended Pulse Drain	<b>12mA</b>
Weight	<b>3.2g</b>

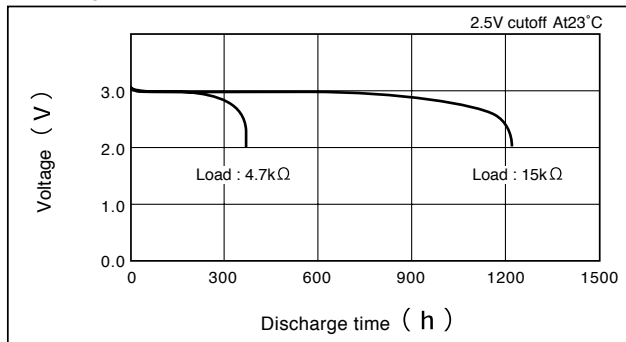
Applications

- Electronic Watch or Clock ● Card Radio
- Remote Controller ● Electronic Game, Toy
- Memory Back-up Power Source for SRAM or Real Time Clock (RTC)

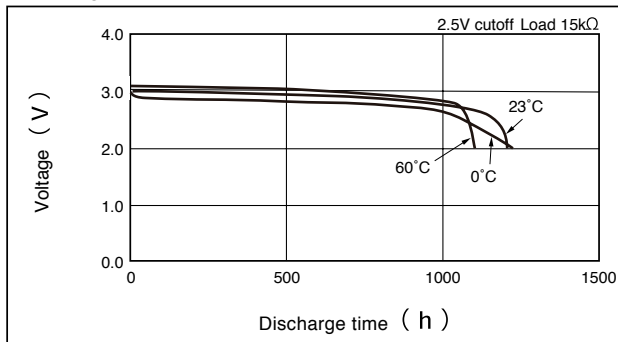
■ Discharge Characteristics



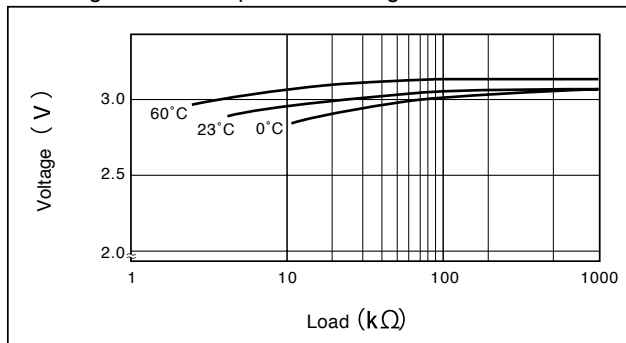
**Discharge Characteristics on Load**



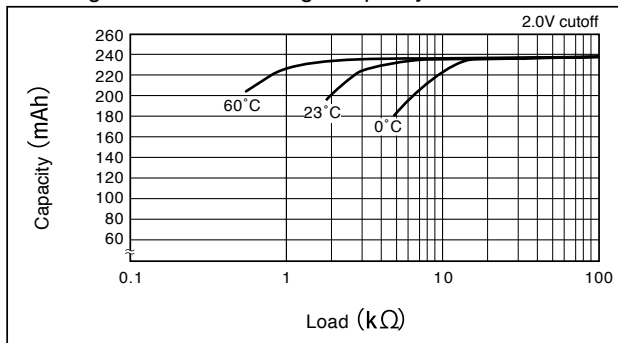
**Discharge Characteristics on Temperature**



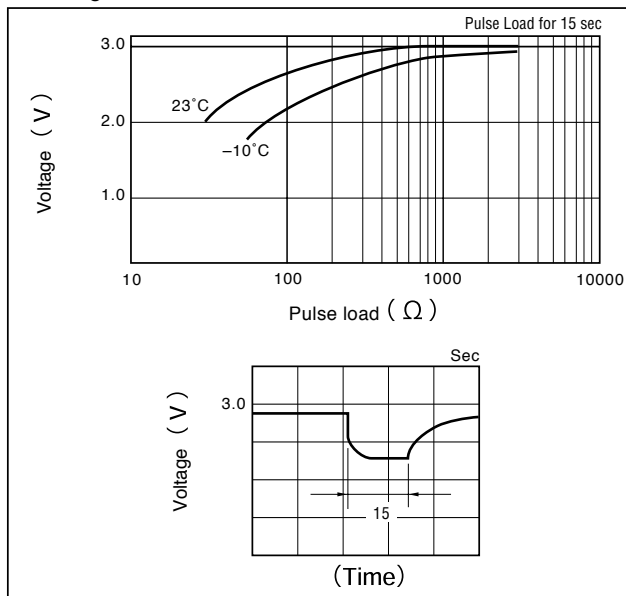
**Discharge Load vs. Operation Voltage (Discharge depth 40%)**



**Discharge Load vs. Discharge Capacity**



**Discharge Characteristics on Pulse Load (Discharge depth 40%)**



**Storage Characteristics**

