

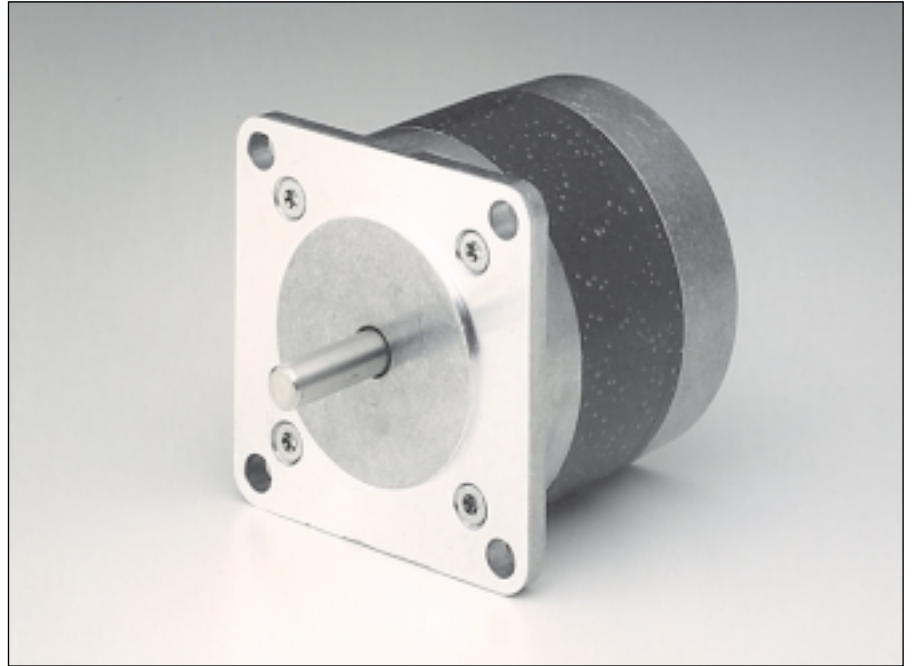
## 6500-20

**Angle de pas**  
**Schrittwinkel**  
**Step angle** 1.8 °

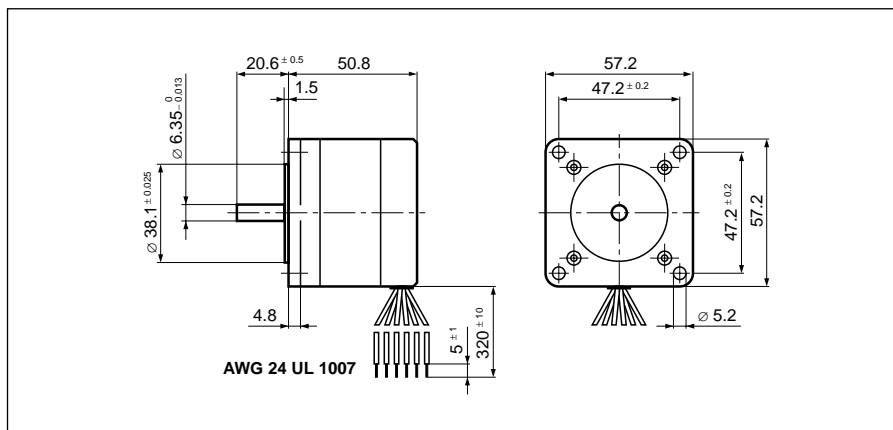
**Diamètre**  
**Durchmesser**  
**Diameter** 57.2 mm

**Poids**  
**Gewicht**  
**Weight** 530 g

**Couple de retenue**  
**Haltemoment**  
**Holding torque** 600/460 mNm

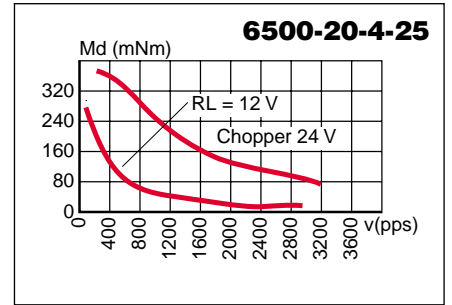
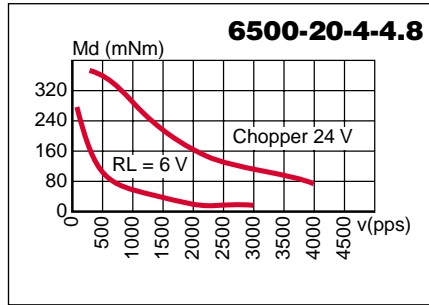
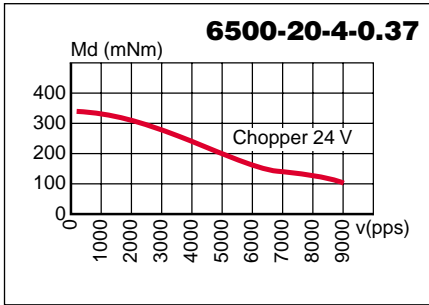
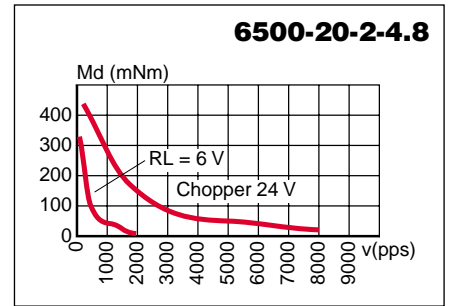
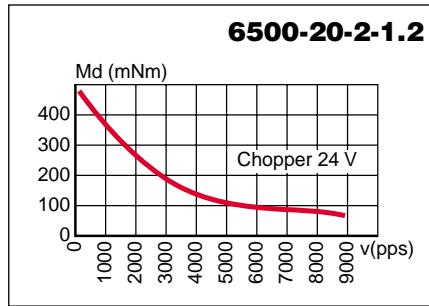
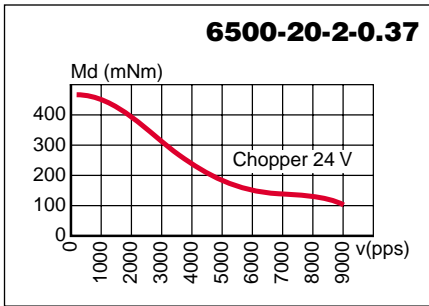


		Résistance de phase Phasenwiderstand Phase resistance $\Omega$	Induct. de phase Phaseninduktivität Phase inductance mH	Courant de phase Phasenstrom Phase current A	Couple de retenue Haltemoment Holding torque mNm	Puissance nominale Nennleistung Nominal power W	
<b>bipolar</b>	<b>6500-20-2-0.37</b>	0.37	1.1	3.9	600	11.25	
	<b>6500-20-2-1.2</b>	1.2	4	2	600	9.6	
	<b>6500-20-2-4.8</b>	4.8	16.5	1	600	9.6	
<b>unipolar</b>	<b>6500-20-4-0.37</b>	0.37	0.56	3.9	460	11.25	
	<b>6500-20-4-4.8</b>	4.8	8.65	1	460	9.6	
	<b>6500-20-4-25</b>	25	38	0.44	460	9.68	

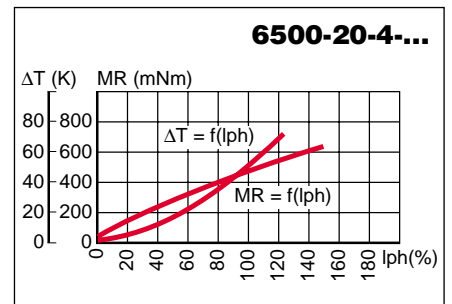
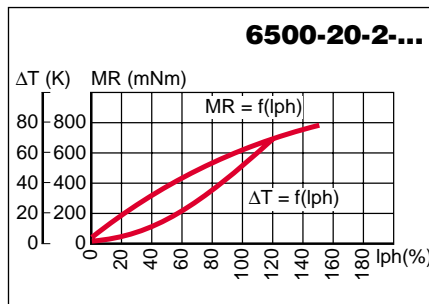


Pas/ Schritte/U Steps/rev	<b>200</b>
Précision/pas Schrittgenauigkeit Step accuracy	<b>± 5 %</b>
Inertie du rotor Rotorträgheitsmoment Rotor inertia	<b>121 gcm<sup>2</sup></b>
Classe d'isolation Isolationsklasse Insulation class	<b>B 130 °C</b>
Protection Schutzart Protection	<b>DIN 40050 IP 30</b>
Tension d'essai Prüfspannung Test voltage	<b>500 VAC</b>
Couple résiduel Restmoment Detent torque	<b>30 mNm</b>

**Caractéristiques dynamiques**  
**Dynamische Daten**  
**Dynamic characteristics**



**Caractéristiques statiques**  
**Statische Daten**  
**Static characteristics**



Possibilités d'exécutions adaptées sur demande.  
 Auf Wunsch werden kundenspezifische Anforderungen berücksichtigt.  
 Special requirements can be made to customer specification.

**SONCEBOZ SA**  
 CH-2605 Sonceboz  
 Tél: +41 32 488 11 11  
 Fax: +41 32 488 11 00  
 E-Mail: info@sonceboz.com  
 Internet: www.sonceboz.com

