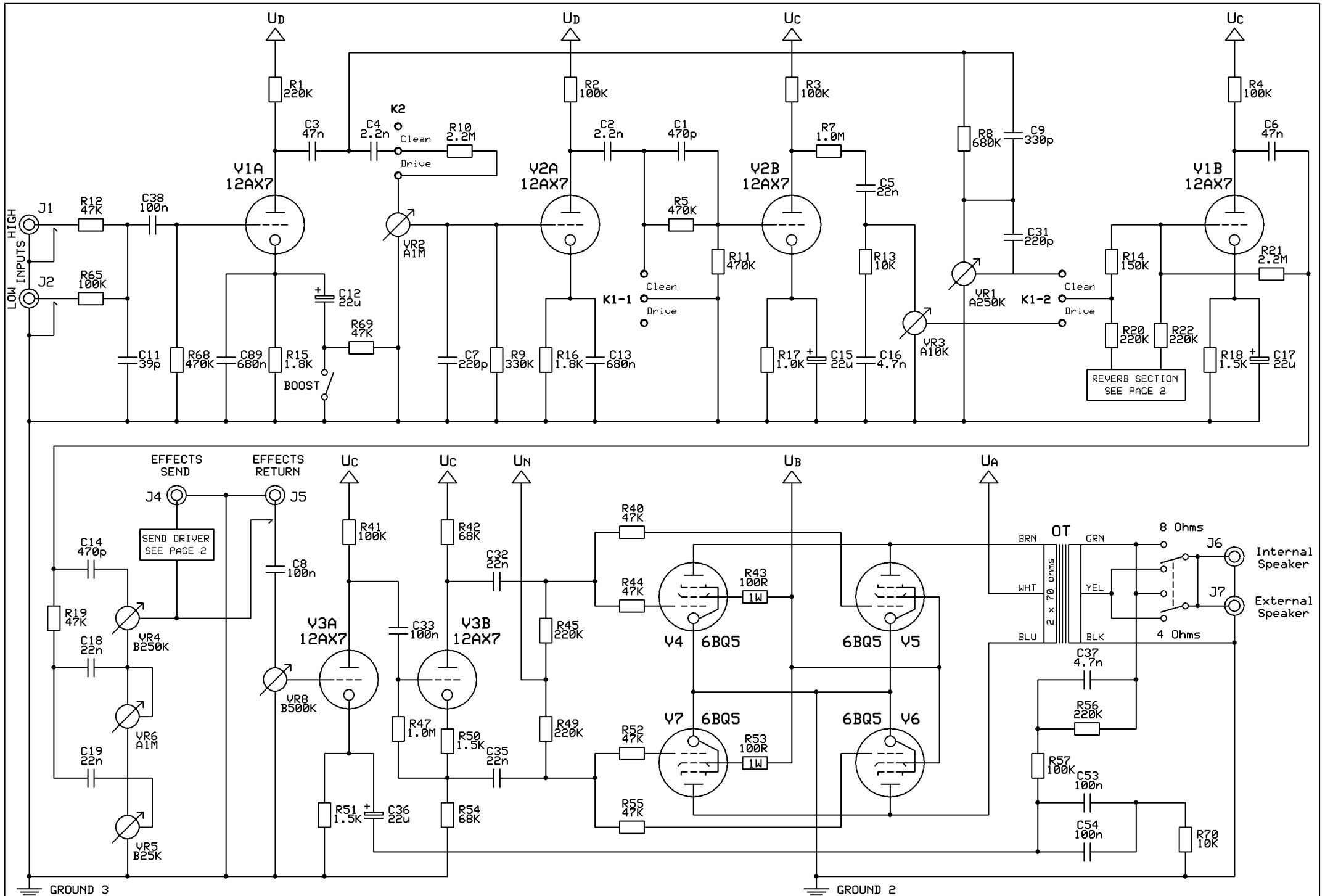
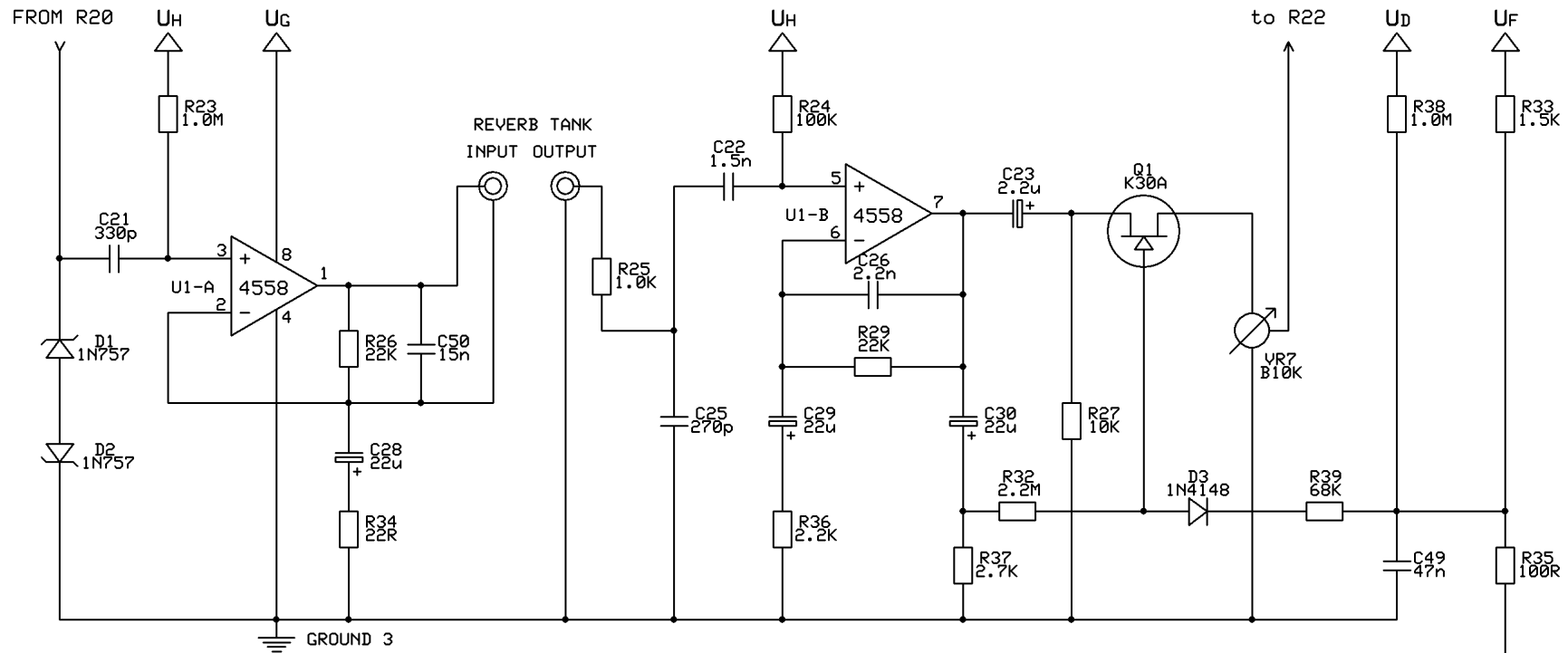


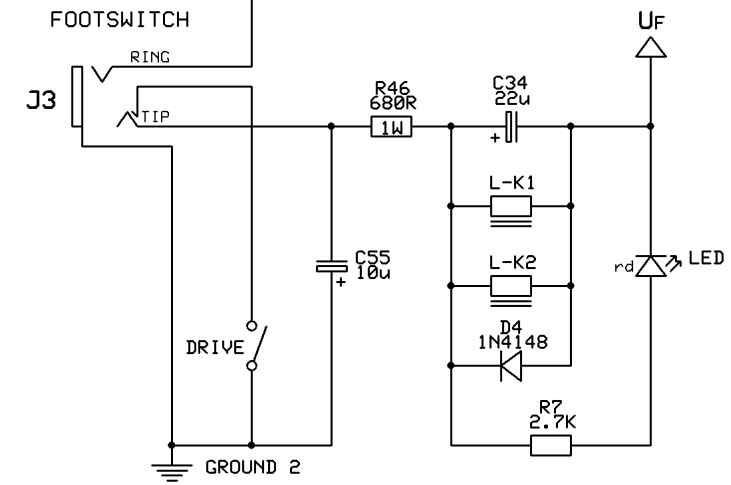
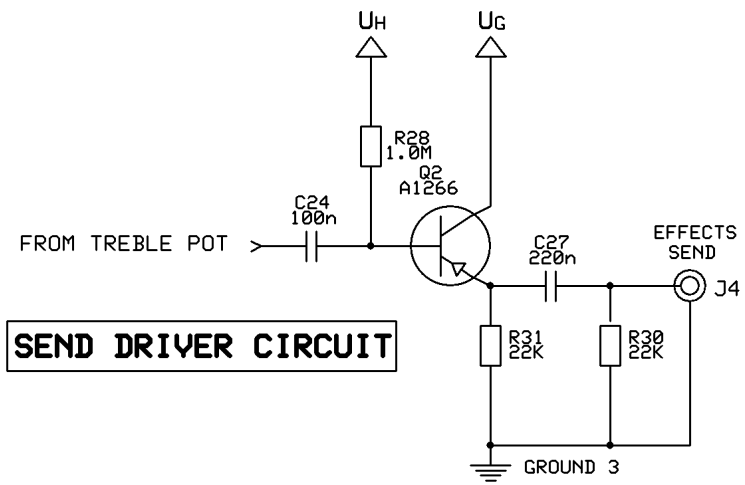
# VT-30 II GUITAR AMPLIFIER - Rev 1.2



**REVERB CIRCUIT**

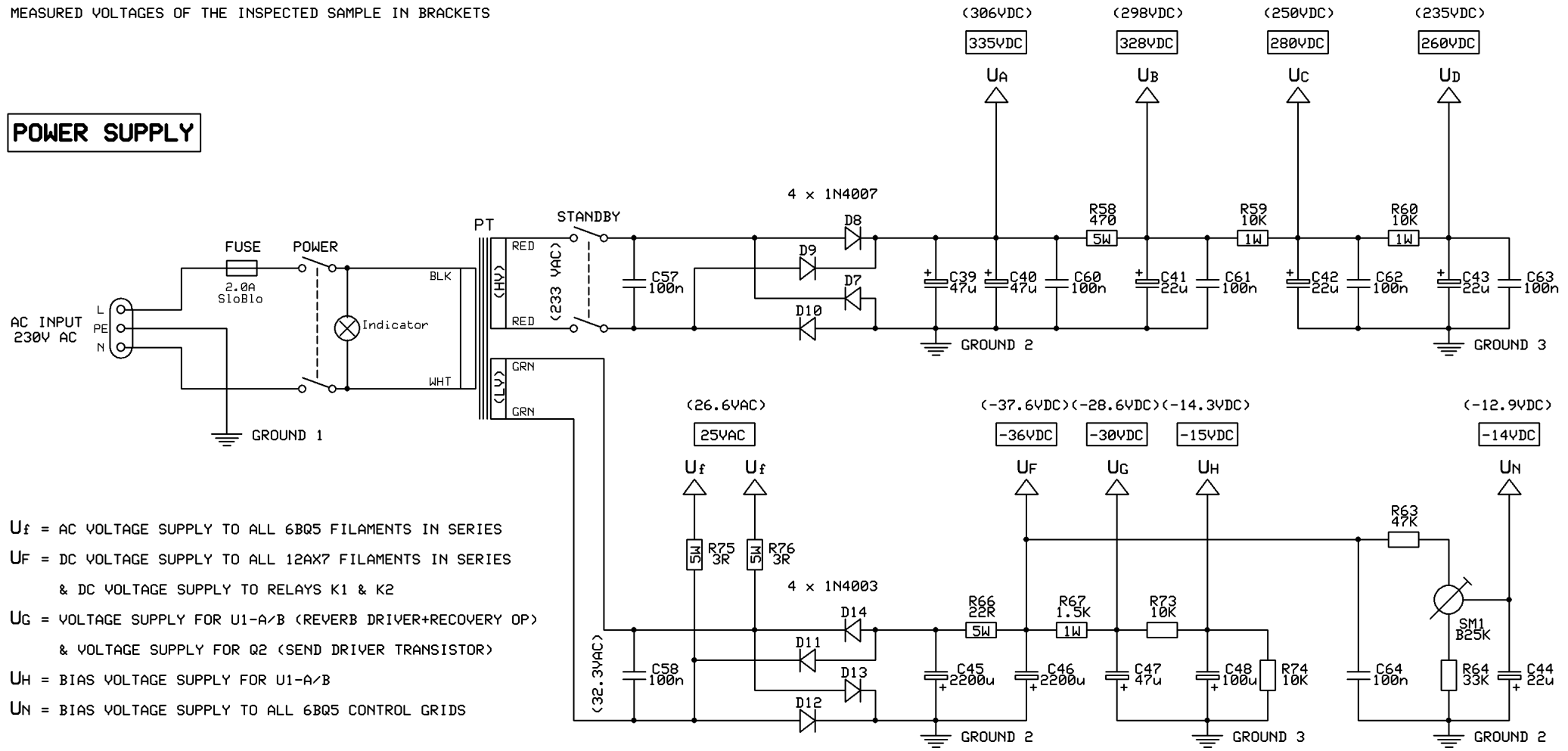


**SEND DRIVER CIRCUIT**



ALL OTHER RESISTORS RATED @ 0.5W - EXCEPT OTHERWISE NOTED  
 ALL COUPLING CAPS POLYESTER (MKT) RATED @ 400V DC  
 ELECTROLYTIC CAPS # C12, C15, C17 & C36 RATED @ 16V DC  
 ELECTROLYTIC CAPS # C39, C40, C41, C42 & C43 RATED @ 450V DC  
 ELECTROLYTIC CAPS # C44, C45, C46, C47 & C48 RATED @ 50V DC  
 ELECTROLYTIC CAPS # C23, C28, C29, C30 & C34 RATED @ 35V DC  
 DESIGNATED VOLTAGES WITHIN A TOLERANCE OF MAX. +/- 5%  
 MEASURED VOLTAGES OF THE INSPECTED SAMPLE IN BRACKETS

## POWER SUPPLY



U<sub>f</sub> = AC VOLTAGE SUPPLY TO ALL 6BQ5 FILAMENTS IN SERIES  
 U<sub>f</sub> = DC VOLTAGE SUPPLY TO ALL 12AX7 FILAMENTS IN SERIES  
 & DC VOLTAGE SUPPLY TO RELAYS K1 & K2  
 U<sub>G</sub> = VOLTAGE SUPPLY FOR U1-A/B (REVERB DRIVER+RECOVERY OP)  
 & VOLTAGE SUPPLY FOR Q2 (SEND DRIVER TRANSISTOR)  
 U<sub>H</sub> = BIAS VOLTAGE SUPPLY FOR U1-A/B  
 U<sub>N</sub> = BIAS VOLTAGE SUPPLY TO ALL 6BQ5 CONTROL GRIDS

GROUND 1 HAS TO BE SEPARATELY CONNECTED TO THE CHASSIS  
 GROUNDS 2 & 3 CAN BE CONNECTED TOGETHER TO THE CHASSIS