

QC
PASS
23

JY 105°C GC(M)
JY 105°C GC(M)
JY 105°C GC(M)

HI-POWER 120W-52V-L
V3.0 SY

C5

D2

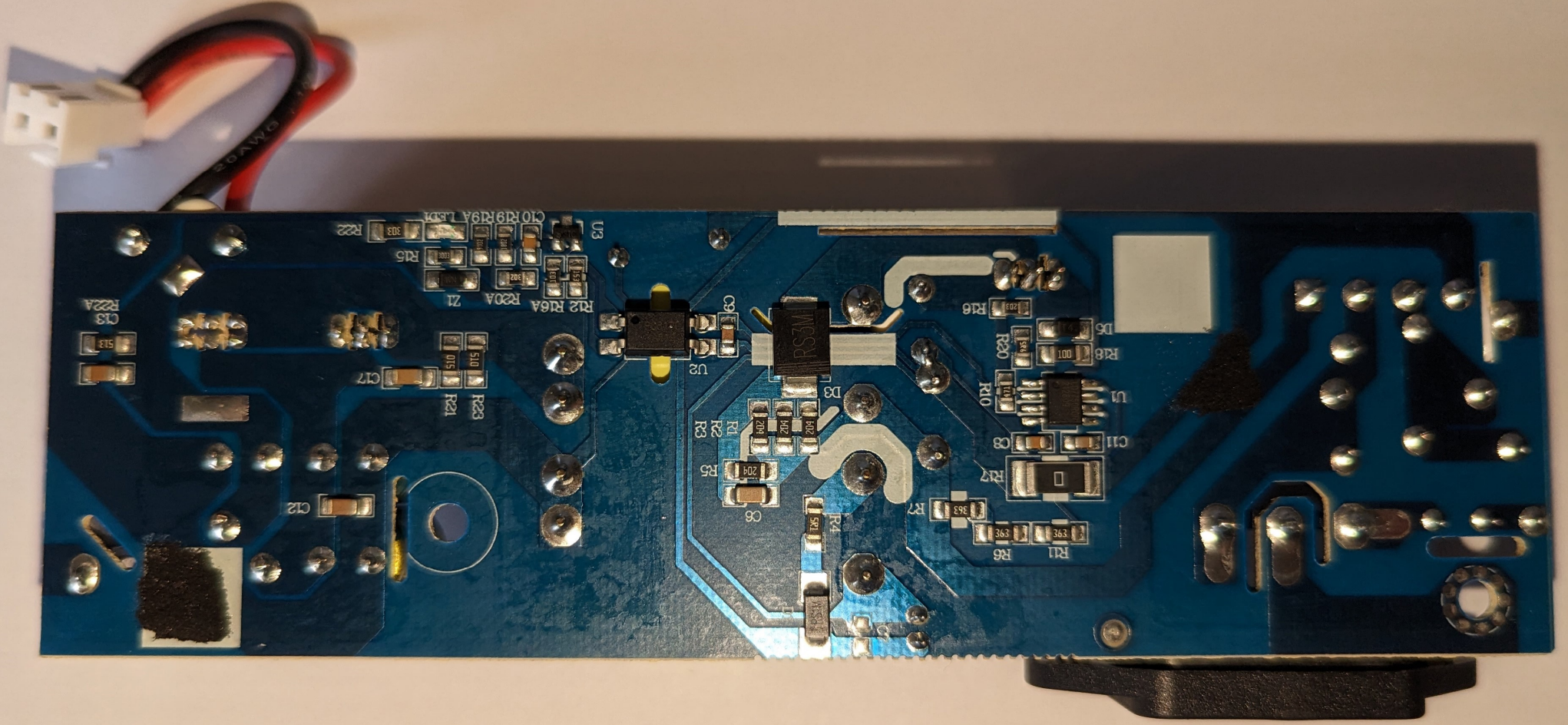
D4

HS2

30 40 50 60 70 80 90 100 110 120 130 140 150

15cm

Lufkin®









Hi-POWER120W-L-V6.0

HI-POWER120W-52V-L-V6.0
18.0

JY 105°C JY 105°C
GC(M) GC(M)

PASS
23

CY1

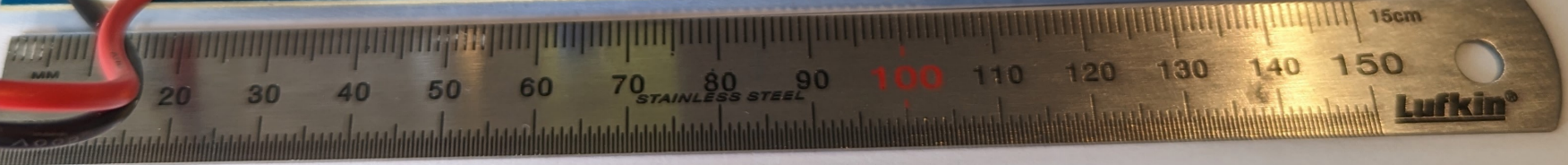


Hi-POWER120W-L-V6.0

Hi-POWER120W-52V-L SY

PASS 23

JY 105°C JY 105°C GCM

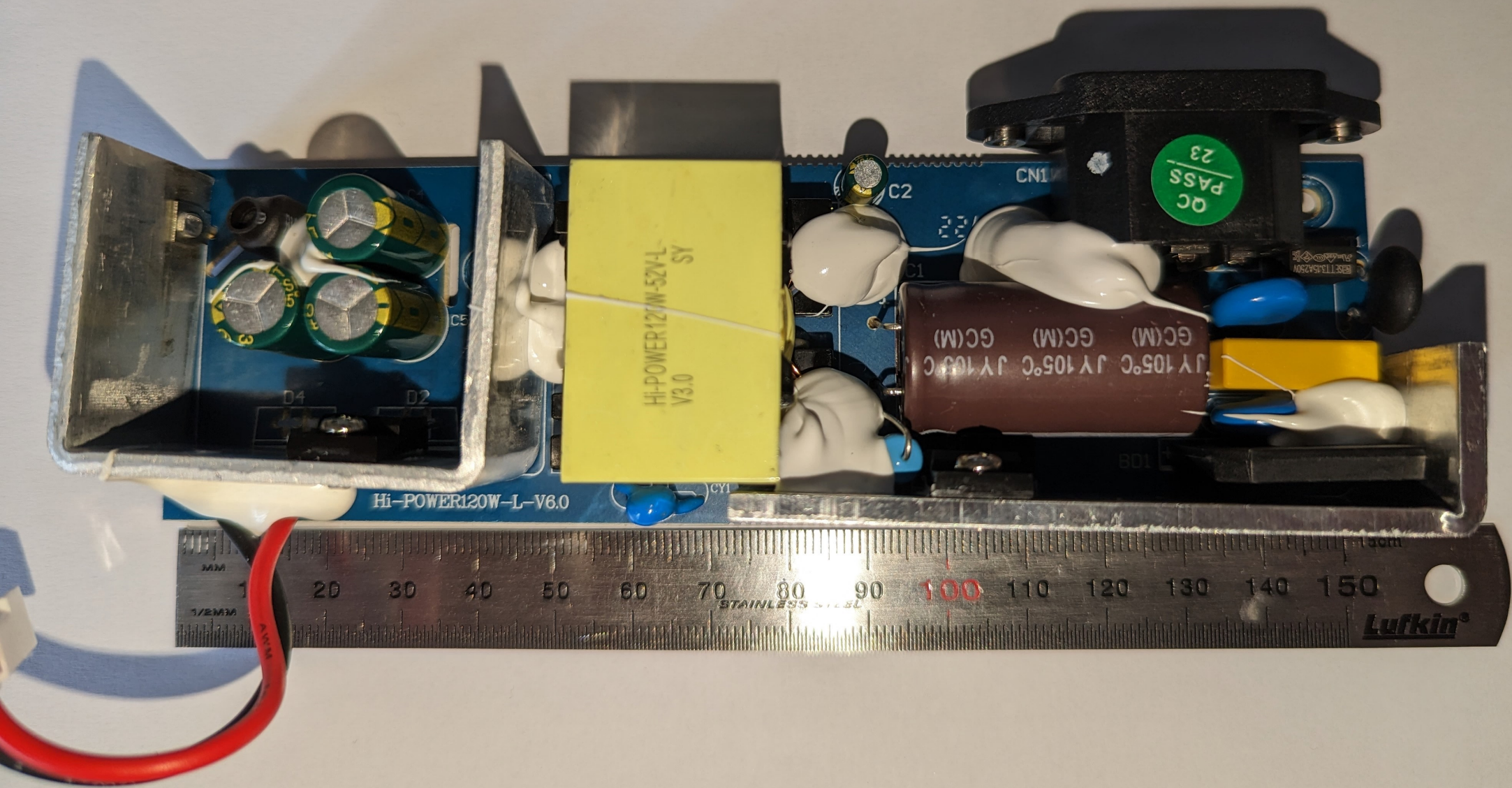


15cm

150

Lufkin

STAINLESS STEEL



Hi-POWER120W-L-V6.0

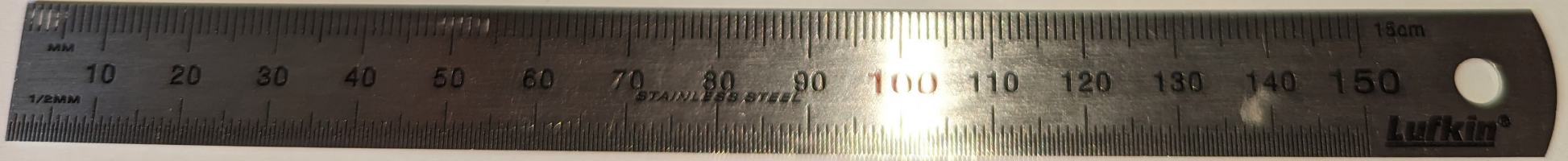
HI-POWER120W-52V-L V3.0 SY

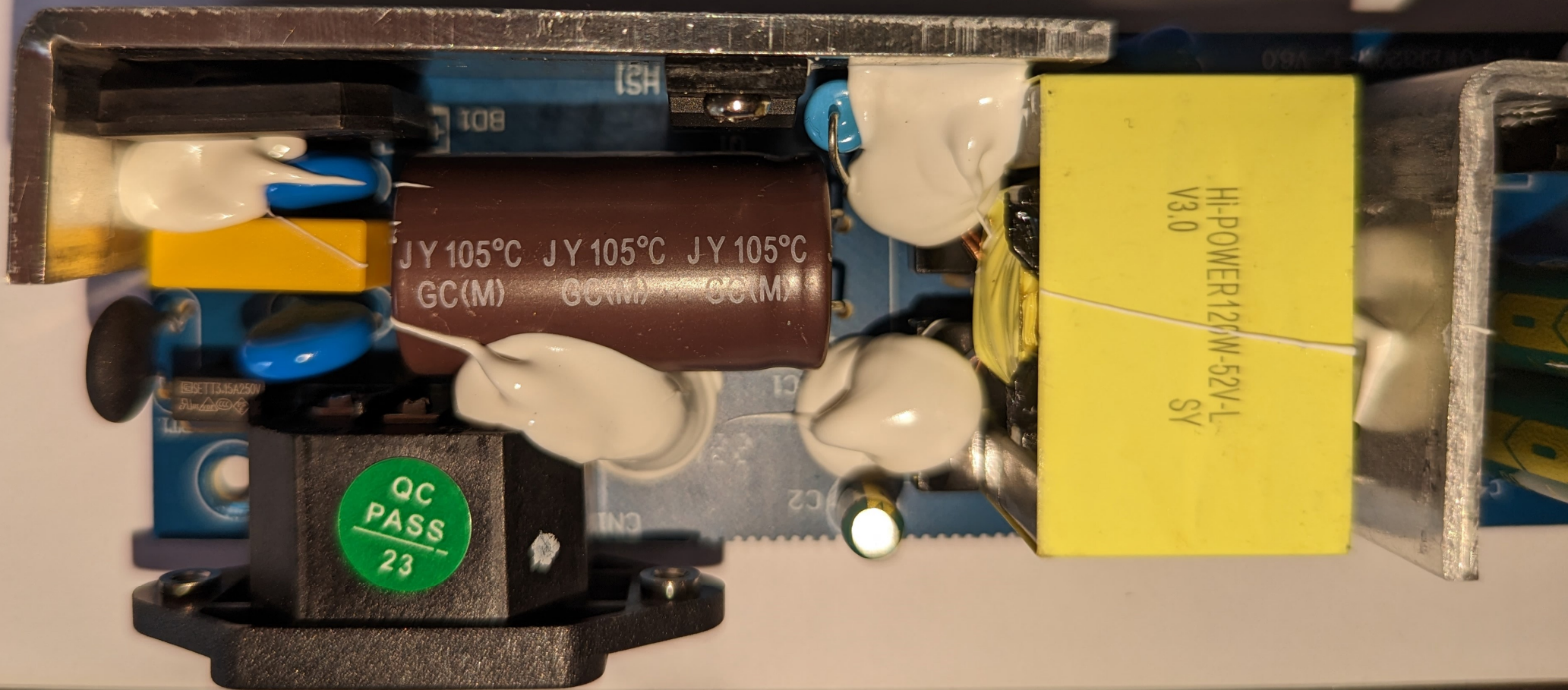
OC PASS 23

JY 105°C JY 100°C GC(M) GC(M) GC(M) GC(M)



Lufkin





JY 105°C JY 105°C JY 105°C
GC(M) 60(M) 30(M)

HI-POWER 120M-52V-L
V3.0
SY

QC
PASS
23

