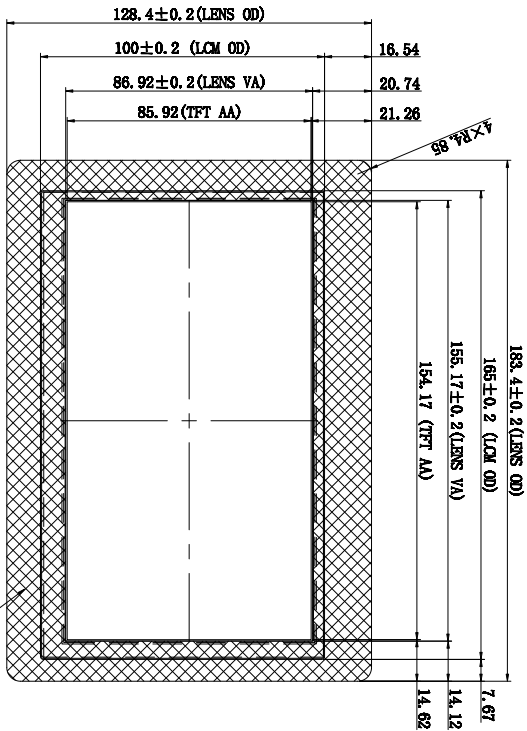
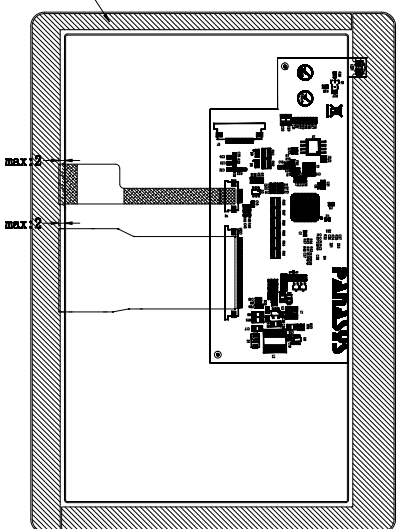


Rev	Revision notes	Date	Prepared/Checked
1			
2			
3			

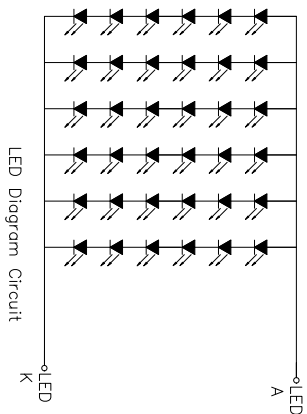


Total thickness	11.7
OTF	1.525
Sensor	0.425
OCA	0.2
LOD	5.7
4.176 (OD)	
6.3 (LED)	
6.8 (TFT)	



底面丝印黑色

Pin NO.	Name
1	VDD
2	GND
3	SPL_SCLK
4	MISO/I/O.1
5	MISO/I/O.0
6	CS
7	INT
8	RST/PD
9	GPIO.0
10	DISP_AUDIO
11	GPIO.1/I/O.2
12	GPIO.2/I/O.3
13	NC
14	NC
15	NC
16	NC
17	BLVDD
18	BLVDD
19	BLVDD
20	BLVDD



LED Diagram Circuit

Pin NO.	Name
17	BLVDD
18	BLVDD
19	BLVDD
20	BLVDD

- NOTES:
1. DISPLAY TYPE: 7.0", 1024*600 IPS TFT LCD
 2. DISPLAY MODE: transmissive Normally Black
 3. VIEWING DIRECTION: FREE
 4. DRIVER IC ON THE BOARD: BT817Q, Interface: SPI/QSPI
 5. LCM (White 9 AVG 1/9) :
Brightness: 1200cd/m² (TYP)

- Note:
1. COVER Glass+ITO FILM+RPC
 - COVER Glass: Asahi Dragon Trail 1.1mm
 - ITO FILM: 0.425mm
 - RPC: (PINH)=0.5mm
 - Thickness: 1.525±0.1mm
 - Drive IC: FT5446
 - Operating Voltage: 2.8V~3.3V
 - Transmittance: ≥85%
 - Hardness: 6H
 - Operating TEMP: -20°C~+70°C, ≤90%RH
 - Storage TEMP: -30°C~+80°C, ≤90%RH
 - General Tolerance: ±0.2mm

6. BACK LIGHT: 36 chip white LED, If=180ma, Vf=16.5-19V
7. OPERATING TEMP: -20° C TO 70° C, STORAGE TEMP: -30° C TO 80° C
8. * Critical Parameter: () ref Parameter, [] opt Parameter

Unspecified Tolerances: ±0.20mm

Modification mark:

9. Supply voltage for module: 3.3V, Supply voltage for backlight: 5.0V(TYP)

10. RECOMMENDS ENVIRONMENTAL PROTECTION: RoHS

本机相关文件属于深圳市云田海实业有限公司，不得转印或拷贝给未经授权的任何第三方，违者将追究法律责任。 This confidential document belongs to Shenzhen SLS Industrial Co., Ltd. It shall not be transferred or copied to unauthorized third parties, or the violators will be investigated for legal responsibility according to the law.

Limits Unless Otherwise Noted

Grade	○	○	○	○
0 - 150	±0.10	±0.15	±0.20	±0.20
150+	±0.20	±0.25	±0.30	±0.30
Angle	±0.50°	±0.80°		

PAMASSYS
Shenzhen SLS Industrial Co., Ltd

材料	设计	签名	日期	材料	单位	比例	客户图号	工程图号	投影法	版本
	绘图			mm	1:1	客户图号	PS817-070MS-C-IPS-47			1.0
	审核					客户图号				
	批准					客户图号				
	客户确认					客户图号				