

11mm Size Metal Shaft Encoder EC11 Series

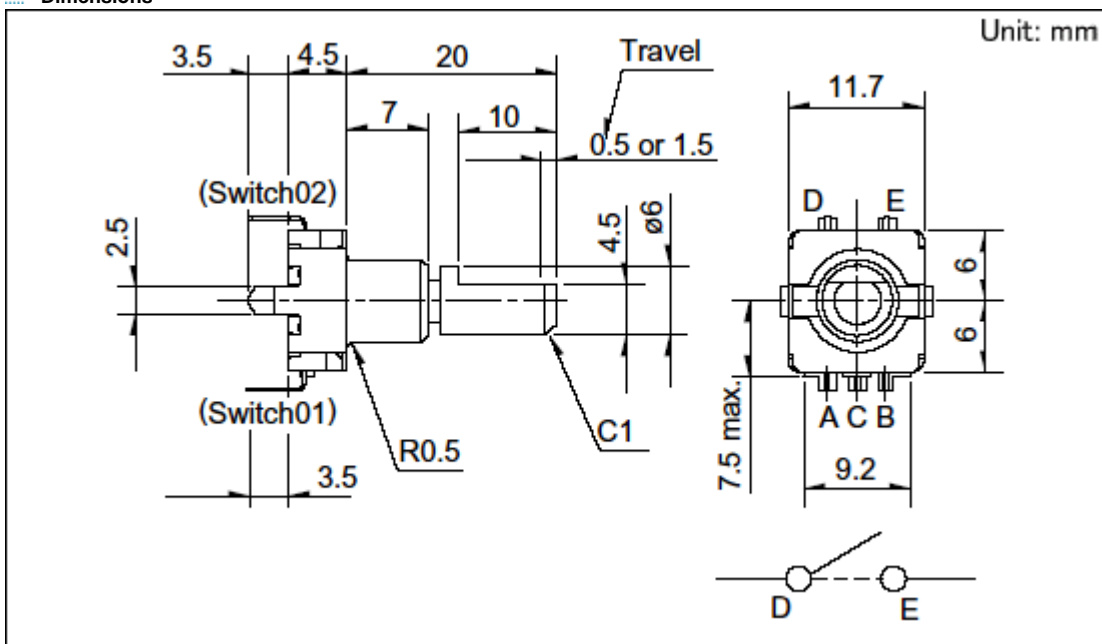
Detail

Model No.		EC11E15244B2	
Structure		Vertical	
Actuator configuration		Flat	
Actuator length		20mm	
Torque		10±7mN·m	
Number of detent		30	
Number of pulse		15	
Operating direction		Vertical	
Push-on switch		With	
Travel of push-on switch		1.5mm	
Operating life		15,000 cycles	
Minimum packing unit (pcs.)		1,200	
Operating temperature range		-30°C to +85°C	
Maximum operating current (Resistive load)		10mA	
Electrical performance	Ratings	10mA 5V DC	
	Output signal	Output of A and B signals, proportionate to phase difference	
	Insulation resistance	100MΩ min. 250V DC	
	Voltage proof	300V AC for 1 minute	
Mechanical performance	Push-pull strength	100N	
	Resistance to soldering heat	Manual soldering	350°C max. 3s max.
		Dip soldering	260±5°C, 5±1s
Durability	Rotational life	15,000 cycles	
Environmental performance	Cold	-40±3°C for 240h	
	Dry heat	85±3°C for 240h	
	Damp heat	60±2°C, 90 to 95%RH for 240h	
Push-on switch specifications	Circuit / number of contact	Single pole and single throw (Push-on)	
	Travel	1.5±0.5mm	
	Operating force	4±2N	
	Rotational torque	0.5A 16V DC (1mA 16V DC min. ratings)	
	Contact resistance	100mΩ for initial period; 200mΩ after rotational life	
	Operating life	20,000 times min.	

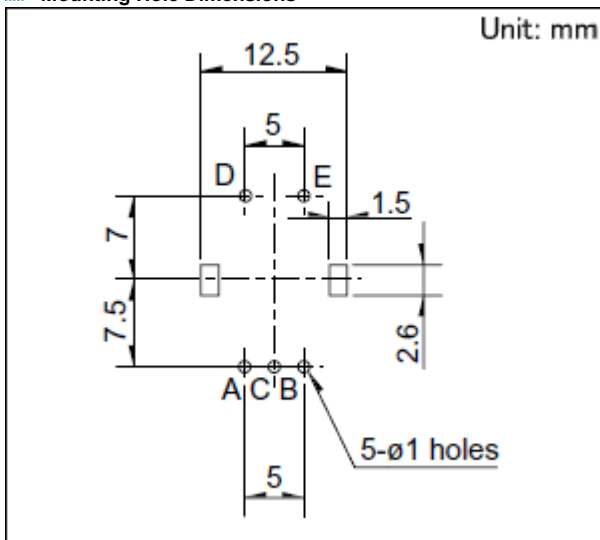
Photo



Dimensions

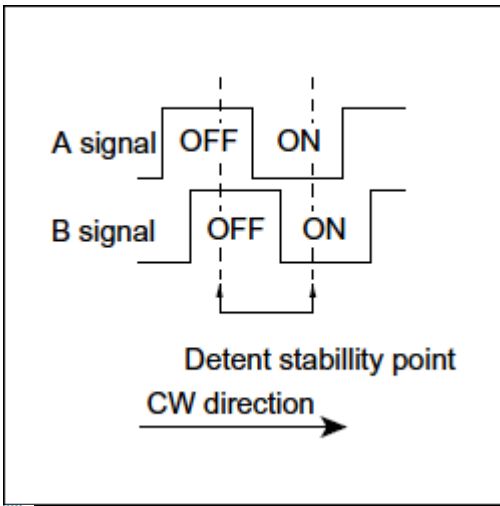


Mounting Hole Dimensions

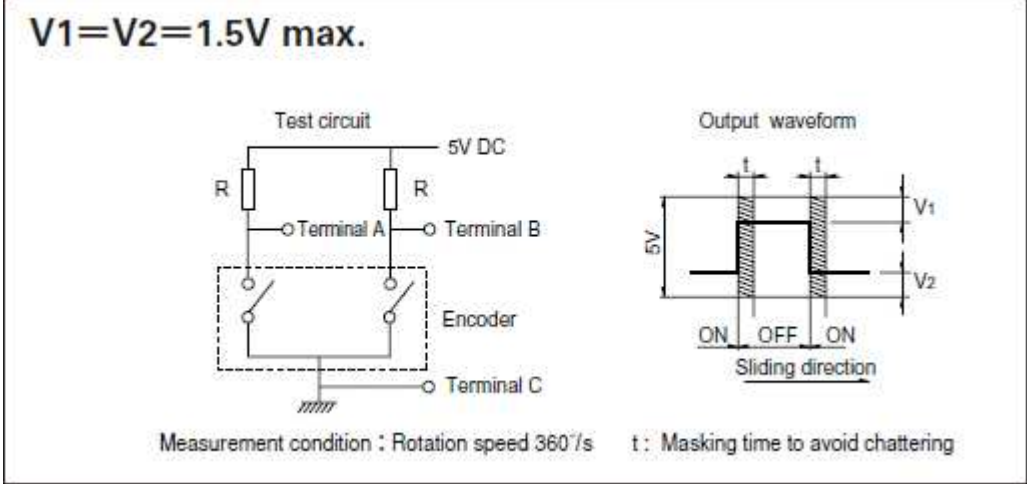


Viewed from mounting side.

Output Wave



Sliding Noise



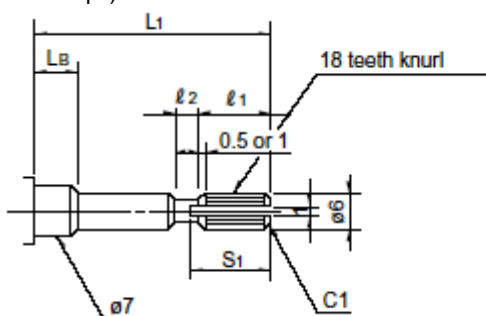
At $R=5k\Omega$ Chattering: 3ms max. Bounce: 2ms max.

Single-shaft Type

1) Knorled Type

Unit : mm

Style (SHaft diameter : $\phi 6$)



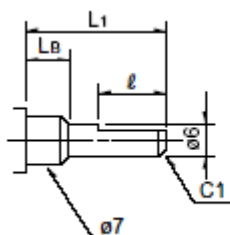
● Detailed dimensions

L ₁	L _b	l ₁	l ₂	S ₁
20	7	6	1	7
25	7	10	2	11

2) Flat Type

Unit : mm

Style (SHaft diameter : $\phi 6$)



● Detailed dimensions

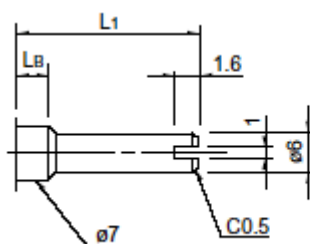
L ₁	L _b	l
15	5	7
15	7	5 (6)
20	7	10 (12)
25	7	12

※ Does not comply with EC111

3) Slotted Type

Unit : mm

Style (SHaft diameter : $\phi 6$)



● Detailed dimensions

L ₁	L _b
15	7
20	7
25	7

» NOTE

Notes are common to this series/models.

1. Place your purchase order in N minimum package units (N: integer).
2. Ask us for the export packaging unit.
3. Products other than those listed in the above chart are also available. Please contact us for details.
4. This products can be used in vehicles.
Although these products are designed to perform over a wide operating temperature range, please ensure that you receive and read the formal delivery specifications before use.

» Inquiries about Products

For more information please contact: Products Information Center.

1-7, Yukigaya-otsuka-machi, Ota-ku, Tokyo, 145-8501, Japan

Phone: +81 (3) 5499-8154